

Environmental Technology

Aeration Equipment



BIBUS[®]
SUPPORTING YOUR SUCCESS



BIBUS - Network of competencies

We are the link between the manufacturing plants and our customers. Our many years of trading partnerships are based on continuity and trust. In this way we achieve the best possible conditions for our customers. Over 60 years of experience in the specialist areas of pneumatics, mechatronics and hydraulics have made BIBUS a leading provider in European industry.

Efficient logistics - our customers make the highest demands

We guarantee a high degree of availability for our more than 250,000 standard articles. Modern warehouse systems with barcodes and mobile data logging terminals ensure an efficient flow of goods.

We provide specific service and repairs in 18 European countries and guarantee a high degree of availability of spare parts throughout the product life cycle.

Quality

Quality and the relevant qualifications go without saying at BIBUS.





SIDE CHANNEL BLOWERS

| | |
|--|-----------|
| RT-1 / RT-2 / RT-3 / RT-4 series | 23 |
| RT-4 / RT-5 / RT-6 / RT-7 / RT-8 / RT-9 series | 24 |
| RT-23 / RT-33 / RT-43 / RT-63 / RT-83 series | 25 |

Applications

Aeration

Swimming pools and whirlpools
Ponds and aquaria
Sewage plants and fluidisation systems

Drying

Electronic components
Plastic profiles

Cleaning

Printing machines
Paper cutting equipment
Cloth cutter

Compressed air

Gas and vapours compression
Powder and granule conveyor

Vacuum

Packing machines
Filling stations
Chemical and medical process technology
Oven drying

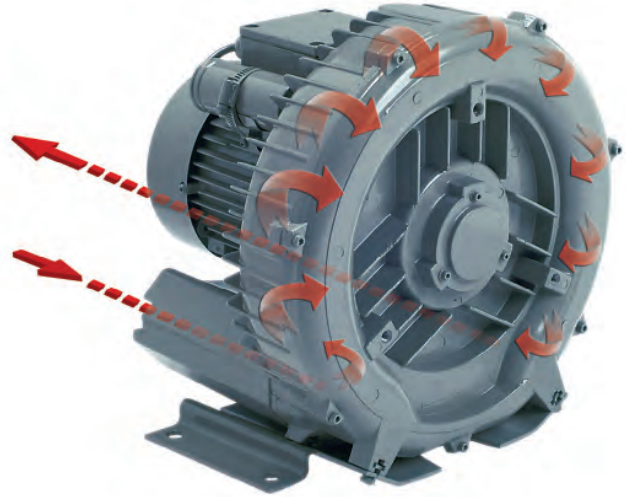
Advantages

- Pulsation-free discharge
- No vibration and dynamic stability
- Minimal maintenance
- Easy installation
- Low noise level
- 100% oil-free air
- Long life expectancy

SIDE CHANNEL BLOWERS

Operating principle

Side channel blowers consist of a ring-shaped housing. Side channel and the rotor opposite create a working area between intake and blow-out connections. The blade segments of the rotor suck in the gas and create radial pressure during turning. The centrifugal force causes the gas to be pressed to the outside in the side channel. This creates a circular current between channel and blade segments. Due to the radial pressure, the gas to be compressed in the chamber begins turning. The spiral swirling compresses the gas several times and causes the pressure to rise. At the end of the chamber the compressed gas is then pushed pulsation-free by the rotor through the blow-out connection.



Setup of side channel blowers in parallel provides a maximum amount of air.

Setup of side channel blowers in series increases the individual high/low pressure.

Examples of use

Side channel blowers are used for applications which require more pressure or vacuum power than a centrifugal blower is able to provide.

The compression procedure is absolutely oil-free and provides applications where pollution of the gas is not allowed.

There are many application areas of side channel blowers, both in pressure and vacuum operation.

Side channel blowers are used for a wide variety of applications in the following industries:

- food and beverage industry
- paper and printing industry
- medical technology
- packaging industry
- water aeration and treatment
- textile industry
- plastics industry
- manufacturing industry
- environmental technology
- and many more

SIDE CHANNEL BLOWERS

Your advantages

Operating principle

The impeller sucks in the gas to be compressed through the input connection, compresses it with spiral swirling and pushes it out again through the output connection. This process occurs as a continuous air current and is thus pulsation-free.

No vibration

The side channel blower is mounted on a carrier plate which is particularly vibration-absorbent. Possible agitations caused by rotor operation are reduced as far as possible.

Minimal, simple maintenance

The impeller of the side channel blowers is mounted directly on the motor shaft. During operation, rotation is completely contactless and lubrication is thus not necessary. This makes operation almost maintenance-free even during continuous operation.

Easy Installation

The installation of the devices is without any problems. The side channel blowers are ready for connexion. Mount in desired axis position, connect the connections to the system, perform electrical installation and the device is ready for operation.

Low noise level

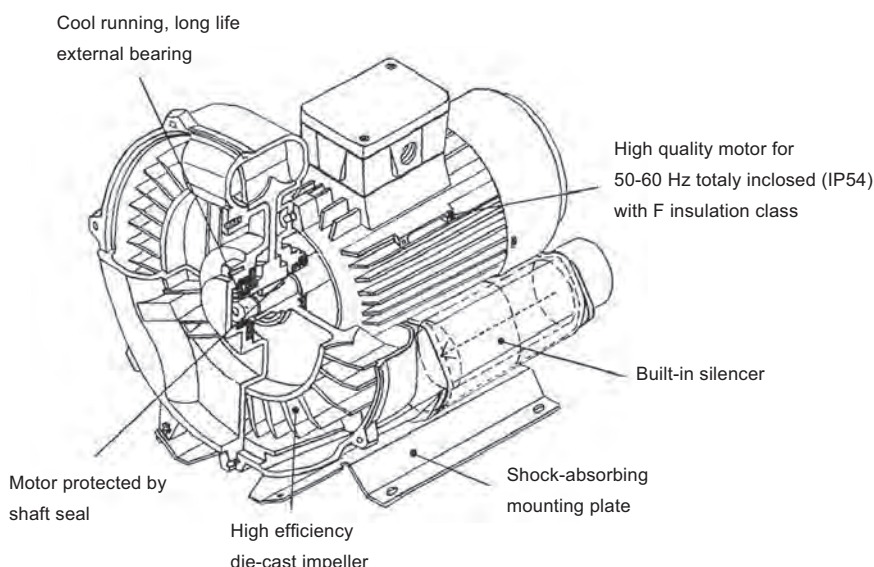
The side channel blowers are equipped with built-in silencers. The carrier plate is also silencing. A maximum degree of noise reduction is achieved. The noise level during operation is only 55 dB to 80 dB, depending on the model.

100 % oil-free air

Due to the contactless rotation of the impellers, lubrication is not necessary. The compression procedure is dry and oil-free and the gas to be compressed is not polluted.

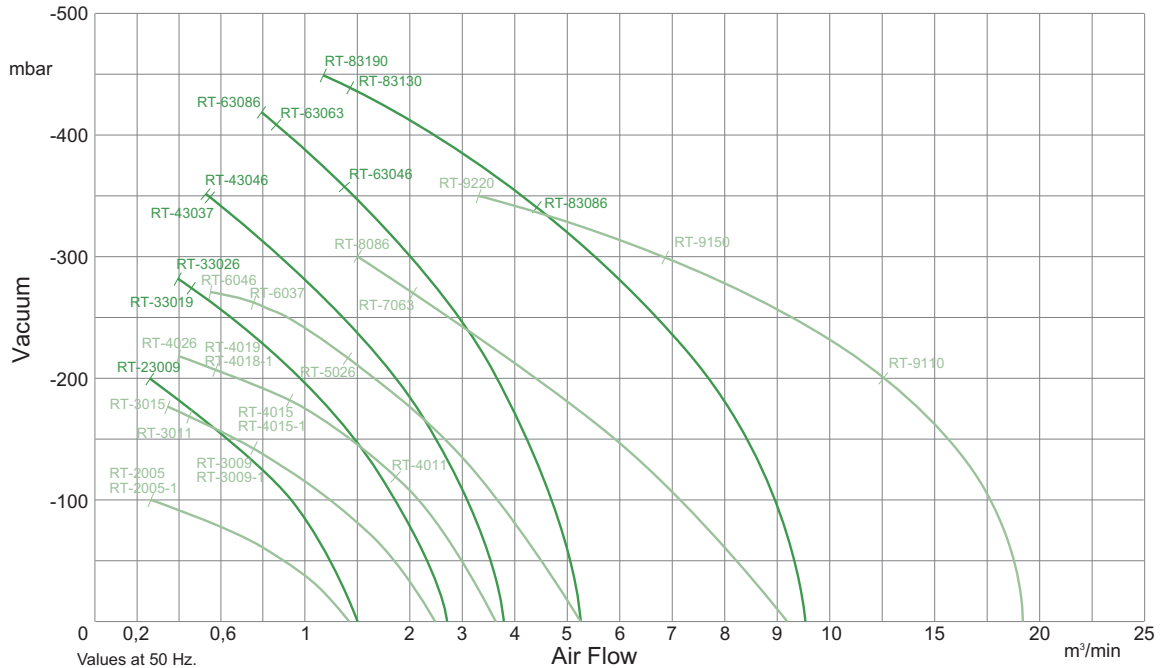
Long life expectancy

The impeller is designed for high performance. The high-quality motor is enclosed in its own capsule and is protected by shaft sealing. Although the device's maintenance requirements are low, it has a long life span.

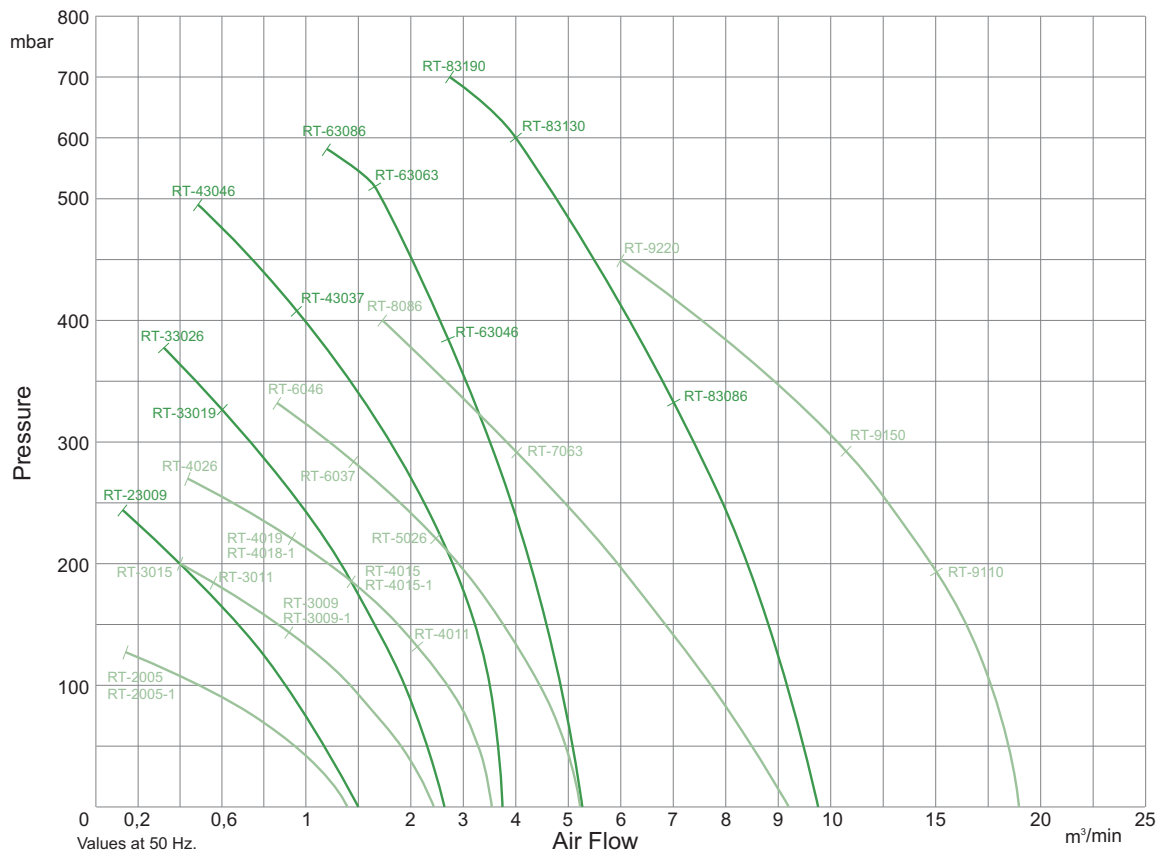


SIDE CHANNEL BLOWERS

Suction curve



Blowing curve





RT-1 / RT-2 / RT-3 / RT-4 series

Product characteristics

- Power 0.2 to 1.3 kW
- Connection size 1" to 2"

Technical data

| Model | | RT-1003 | RT-1003-1 | RT-2005 | RT-2005-1 | RT-3009 | RT-3009-1 | RT-4018-1 |
|-------------------|---------------------|------------|------------|----------------|----------------|----------------|----------------|------------|
| Current phase | | 3 | 1 | 3 | 1 | 3 | 1 | 1 |
| Voltage | VAC | 400 | 220 | 400 | 220 | 400 | 220 | 220 |
| Frequency | Hz | 50 | 50 | 50 | 50 | 50 | 50 | 50 |
| Motor power | kW | 0.2 | 0.2 | 0.4 | 0.4 | 0.75 | 0.75 | 1.5 |
| Max. air flow | m ³ /min | 0.8 | 0.8 | 1.4 | 1.4 | 2.4 | 2.4 | 3.6 |
| Vacuum | mbar | 70 | 70 | 110 | 110 | 140 | 140 | 210 |
| Pressure | mbar | 70 | 70 | 130 | 130 | 140 | 140 | 220 |
| Noise level | dB | 53 | 53 | 58 | 58 | 63 | 63 | 70 |
| Connection size P | | 1" (25 mm) | 1" (25 mm) | 1 1/4" (32 mm) | 1 1/4" (32 mm) | 1 1/2" (40 mm) | 1 1/2" (40 mm) | 2" (50 mm) |
| Net weight | kg | 6.5 | 6.5 | 11 | 11.5 | 14.5 | 15 | 23 |



RT-4 / RT-5 / RT-6 / RT-7 / RT-8 / RT-9 series

Product characteristics

- Power 1.75 to 20.0 kW
- Connection size 2" to 4"

26

Technical data

| Model | | RT-4018-1 | RT-4019 | RT-5026 | RT-6037 | RT-6046 | RT-7063 | RT-8086 | RT-9110 | RT-9150 |
|-------------------|---------------------|------------|------------|------------|------------|------------|----------------|----------------|-------------|-------------|
| Current phase | | 1 | 3 | 3 | 3 | 3 | 3 | 3 | 3 | 3 |
| Voltage | VAC | 220 | 400 | 400 | 400 | 400 | 400 | 400 | 400 | 400 |
| Frequency | Hz | 50 | 50 | 50 | 50 | 50 | 50 | 50 | 50 | 50 |
| Motor power | kW | 1.5 | 1.75 | 2.2 | 3.4 | 4 | 5.5 | 7.5 | 9 | 13 |
| Max. air flow | m ³ /min | 3.6 | 3.6 | 5.2 | 5.2 | 5.2 | 9.2 | 9.2 | 18.9 | 18.9 |
| Vacuum | mbar | 210 | 210 | 230 | 260 | 270 | 270 | 300 | 200 | 300 |
| Pressure | mbar | 220 | 220 | 230 | 280 | 330 | 300 | 400 | 200 | 300 |
| Noise level | dB | 70 | 70 | 72 | 72 | 72 | 74 | 74 | 76 | 76 |
| Connection size P | | 2" (50 mm) | 2" (50 mm) | 2" (50 mm) | 2" (50 mm) | 2" (50 mm) | 2 1/2" (64 mm) | 2 1/2" (64 mm) | 4" (100 mm) | 4" (100 mm) |
| Net weight | kg | 23 | 23 | 32 | 35 | 38 | 78 | 82 | 100 | 112 |



RT-23 / RT-33 / RT-43 / RT-63 / RT-83 series

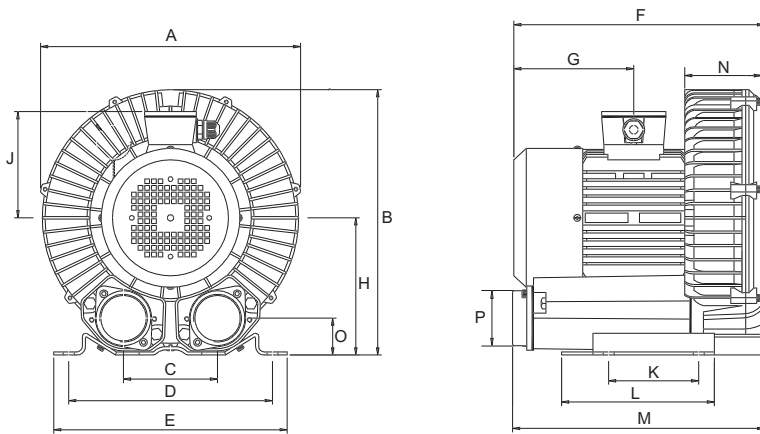
Product characteristics

- Power 1.5 to 9.6 kW
- Connection size 1 1/4" to 2 1/2"

Technical data

| Model | | RT1-23009 | RT1-23009-1 | RT1-33015-1 | RT1-33019 | RT1-33026 | RT1-43037 | RT1-43046 | RT1-63046 | RT1-63063 | RT1-83086 | RT1-83130 |
|-------------------|---------------------|----------------|----------------|----------------|----------------|------------|------------|------------|------------|----------------|-----------|-----------|
| Current phase | | 3 | 1 | 1 | 3 | 3 | 3 | 3 | 3 | 3 | 3 | 3 |
| Voltage | VAC | 400 | 220 | 220 | 400 | 400 | 400 | 400 | 400 | 400 | 400 | 400 |
| Frequency | Hz | 50 | 50 | 50 | 50 | 50 | 50 | 50 | 50 | 50 | 50 | 50 |
| Motor power | kW | 0.75 | 0.75 | 1.5 | 1.75 | 2.2 | 3.4 | 4 | 4 | 5.5 | 7.5 | 11 |
| Max. air flow | m ³ /min | 1.5 | 1.5 | 2.6 | 2.6 | 2.6 | 3.7 | 3.7 | 5.2 | 5.2 | 9.6 | 9.6 |
| Vacuum | mbar | 200 | 200 | 220 | 275 | 280 | 345 | 355 | 360 | 410 | 320 | 430 |
| Pressure | mbar | 240 | 240 | 250 | 320 | 375 | 410 | 460 | 380 | 515 | 320 | 600 |
| Noise level | dB | 60 | 60 | 66 | 66 | 66 | 74 | 74 | 75 | 75 | 76 | 76 |
| Connection size P | | 1 1/4" (32 mm) | 1 1/4" (32 mm) | 1 1/2" (40 mm) | 1 1/2" (40 mm) | 2" (50 mm) | 2" (50 mm) | 2" (50 mm) | 2" (50 mm) | 2 1/2" (64 mm) | | |
| Net weight | kg | 17 | 17 | 25 | 25 | 28 | 43 | 45 | 55 | 72 | 112 | 142 |

Dimensions single stage



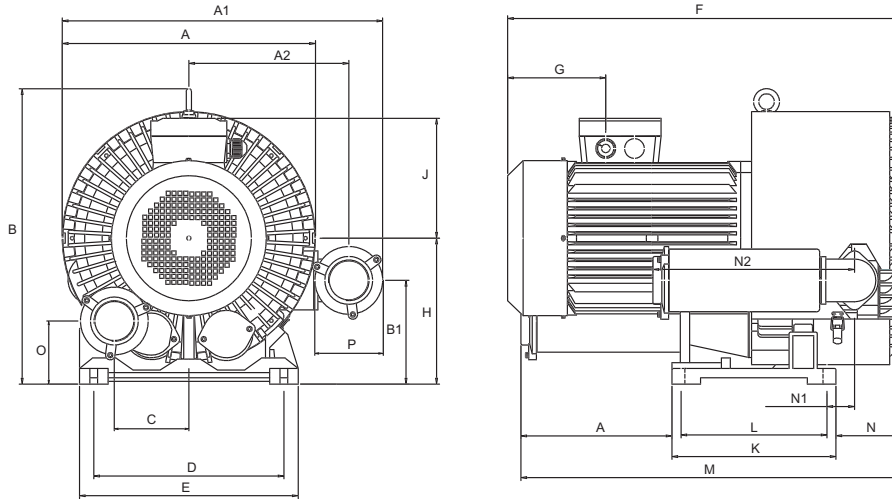
28

| | A | B | C | D | E | F | G | H | J | K | L | M | N | O | P |
|-----------|-------|-------|-------|-------|-------|-------|-------|-------|-------|-------|-------|-------|-------|------|--------|
| RT-1003 | 208.5 | 213.5 | 71.0 | 165.0 | 186.0 | 209.5 | 72.0 | 108.0 | 142.0 | - | 100.0 | 205.0 | 54.0 | 38.0 | 1" |
| RT-1003-1 | 208.5 | 213.5 | 71.0 | 165.0 | 186.0 | 209.5 | 72.0 | 108.0 | 142.0 | - | 100.0 | 205.0 | 54.0 | 38.0 | 1" |
| RT-2005 | 248.0 | 249.0 | 91.0 | 205.0 | 227.0 | 239.0 | 118.0 | 130.0 | 112.0 | 83.0 | 108.0 | 245.0 | 63.0 | 42.0 | 1 1/4" |
| RT-2005-1 | 248.0 | 249.0 | 91.0 | 205.0 | 227.0 | 239.0 | 118.0 | 130.0 | 112.0 | 83.0 | 108.0 | 245.0 | 63.0 | 42.0 | 1 1/4" |
| RT-3009 | 285.0 | 301.0 | 115.0 | 225.0 | 257.0 | 279.0 | 106.0 | 153.0 | 124.0 | 90.0 | 130.0 | 264.0 | 76.0 | 45.0 | 1 1/2" |
| RT-3009-1 | 285.0 | 301.0 | 115.0 | 225.0 | 257.0 | 279.0 | 106.0 | 153.0 | 124.0 | 90.0 | 130.0 | 264.0 | 76.0 | 45.0 | 1 1/2" |
| RT-4018-1 | 332.0 | 338.5 | 120.0 | 260.0 | 298.0 | 320.0 | 153.0 | 175.0 | 135.5 | 115.0 | 195.0 | 321.5 | 98.0 | 47.0 | 2" |
| RT-4019 | 332.0 | 338.5 | 120.0 | 260.0 | 298.0 | 320.0 | 153.0 | 175.0 | 135.5 | 115.0 | 195.0 | 321.5 | 98.0 | 47.0 | 2" |
| RT-5026 | 383.0 | 416.5 | 125.0 | 290.0 | 332.0 | 370.0 | 154.0 | 195.0 | 160.0 | 140.0 | 180.0 | 362.0 | 120.0 | 50.0 | 2" |
| RT-6037 | 383.0 | 416.5 | 125.0 | 290.0 | 332.0 | 370.0 | 154.0 | 195.0 | 160.0 | 140.0 | 180.0 | 362.0 | 120.0 | 50.0 | 2" |
| RT-6046 | 383.0 | 416.5 | 125.0 | 290.0 | 332.0 | 370.0 | 154.0 | 195.0 | 160.0 | 140.0 | 180.0 | 362.0 | 120.0 | 50.0 | 2" |
| RT-7063 | 464.0 | 567.0 | 145.0 | 365.0 | 420.0 | 462.0 | 160.0 | 280.0 | 188.0 | 280.0 | 315.0 | 490.0 | 140.0 | 96.0 | 2 1/2" |
| RT-8086 | 464.0 | 567.0 | 145.0 | 365.0 | 420.0 | 462.0 | 160.0 | 280.0 | 188.0 | 280.0 | 315.0 | 490.0 | 140.0 | 96.0 | 2 1/2" |
| RT-9110 | 560.0 | 629.0 | 210.0 | 360.0 | 415.0 | 621.5 | 178.5 | 306.0 | 230.0 | 600.0 | 638.5 | 710.0 | 213.0 | 95.0 | 4" |
| RT-9150 | 560.0 | 629.0 | 210.0 | 360.0 | 415.0 | 621.5 | 178.5 | 306.0 | 230.0 | 600.0 | 638.5 | 710.0 | 213.0 | 96.0 | 4" |

Values in mm.

Drawings similar in design: Please contact our technical support for detailed drawings of your requested side channel blower.

Dimensions double stage



| | A | A1 | A2 | B | B1 | C | D | E | F | G | H | J | K | L | M | N | N1 | N2 | O | P |
|-------------|-------|-------|-------|-------|-------|-------|-------|-------|-------|-------|-------|-------|-------|-------|-------|-------|-------|-------|------|--------|
| RT1-23009 | 283.0 | 338.0 | - | 272.0 | 110.0 | 46.0 | 205.0 | 227.0 | 308.0 | 118.0 | 130.0 | 112.0 | 108.0 | 83.0 | 314.0 | 136.0 | 89.0 | - | 42.0 | 1 1/4" |
| RT1-23009-1 | 283.0 | 338.0 | - | 272.0 | 110.0 | 46.0 | 205.0 | 227.0 | 308.0 | 118.0 | 130.0 | 112.0 | 108.0 | 83.0 | 314.0 | 136.0 | 89.0 | - | 42.0 | 1 1/4" |
| RT1-33015-1 | 320.0 | 350.0 | - | 313.0 | 153.0 | 58.0 | 225.0 | 257.0 | 416.0 | 153.0 | 153.0 | 136.0 | 130.0 | 90.0 | 345.0 | 154.0 | 104.0 | - | 45.0 | 1 1/2" |
| RT1-33019 | 320.0 | 350.0 | - | 313.0 | 153.0 | 58.0 | 225.0 | 257.0 | 411.0 | 153.0 | 153.0 | 136.0 | 130.0 | 90.0 | 345.0 | 154.0 | 104.0 | - | 45.0 | 1 1/2" |
| RT1-33026 | 320.0 | 350.0 | - | 313.0 | 153.0 | 58.0 | 225.0 | 257.0 | 411.0 | 153.0 | 153.0 | 136.0 | 130.0 | 90.0 | 345.0 | 154.0 | 104.0 | - | 45.0 | 1 1/2" |
| RT1-43037 | 369.0 | 443.0 | - | 374.0 | 140.0 | 60.0 | 260.0 | 298.0 | 458.0 | 154.0 | 175.0 | 160.0 | 155.0 | 115.0 | 407.0 | 170.0 | 110.0 | - | 47.0 | 2" |
| RT1-43046 | 369.0 | 443.0 | - | 374.0 | 140.0 | 60.0 | 260.0 | 298.0 | 458.0 | 154.0 | 175.0 | 160.0 | 155.0 | 115.0 | 407.0 | 170.0 | 110.0 | - | 47.0 | 2" |
| RT1-63046 | 424.0 | 454.0 | - | 417.0 | 158.0 | 62.0 | 290.0 | 332.0 | 467.0 | 154.0 | 195.0 | 160.0 | 180.0 | 140.0 | 459.0 | 206.0 | 132.0 | - | 50.0 | 2" |
| RT1-63063 | 424.0 | 454.0 | - | 416.5 | 158.0 | 155.0 | 290.0 | 332.0 | 584.5 | 159.5 | 195.0 | 187.5 | 180.0 | 140.0 | 598.0 | 206.0 | 132.0 | - | 98.0 | 2" |
| RT1-83086 | 486.0 | 615.0 | 307.0 | 567.0 | 199.0 | 72.5 | 365.0 | 420.0 | 586.5 | 159.5 | 280.0 | 176.5 | 315.0 | 280.0 | 618.0 | 128.0 | 53.0 | 387.0 | 96.0 | 2 1/2" |
| RT1-83130 | 486.0 | 615.0 | 307.0 | 567.0 | 199.0 | 143.0 | 365.0 | 420.0 | 758.0 | 189.0 | 280.0 | 230.0 | 315.0 | 280.0 | 733.0 | 260.0 | 128.0 | 387.0 | 121 | 2 1/2" |

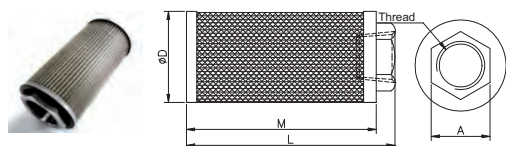
Values in mm.

Drawings similar in design: Please contact our technical support for detailed drawings of your requested side channel blower.

SIDE CHANNEL BLOWERS

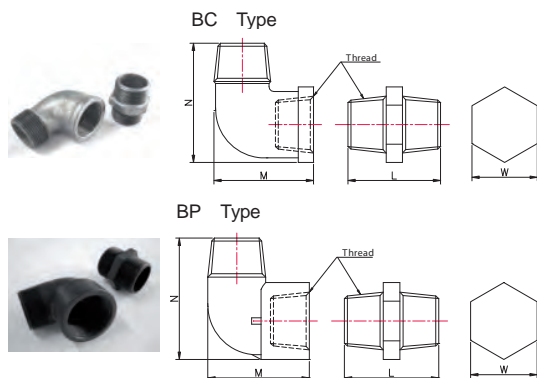
Accessories

Filter



| Type | Thread | A mm | D mm | L mm | M mm | Filtration mesh | Flow l/min | Weight kg |
|-------|--------|------|------|------|------|-----------------|------------|-----------|
| MF-08 | 1" | 42 | 58 | 170 | 155 | 100 | 110 | 0.20 |
| MF-10 | 1 1/4" | 54 | 71 | 186 | 170 | 100 | 210 | 0.35 |
| MF-12 | 1 1/2" | 65 | 85 | 196 | 182 | 100 | 285 | 0.49 |
| MF-16 | 2" | 75 | 103 | 215 | 202 | 100 | 395 | 0.65 |
| MF-20 | 2 1/2" | 97 | 148 | 274 | 252 | 100 | 750 | 1.20 |
| MF-32 | 4" | 142 | 208 | 380 | 357 | 100 | 1000 | 2.45 |

Elbow and Bend

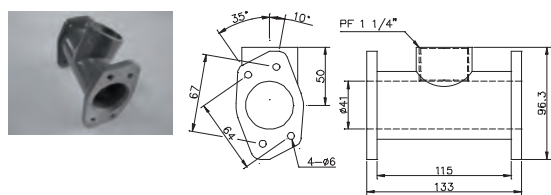


| Type | Thread | L mm | M mm | N mm | W mm | Weight kg | Material |
|-------|--------|------|------|------|------|-----------|-----------|
| BC-10 | 1" | 52 | 52 | 73 | 38 | 0.36 | Cast Iron |
| BC-12 | 1 1/4" | 56 | 65 | 90 | 47 | 0.57 | Cast Iron |
| BC-15 | 1 1/2" | 60 | 73 | 97 | 54 | 0.87 | Cast Iron |
| BC-20 | 2" | 67 | 85 | 120 | 65 | 1.30 | Cast Iron |
| BP-20 | 2" | 75 | 94 | 110 | 67 | 0.28 | Plastic |
| BC-25 | 2 1/2" | 76 | 105 | 137 | 82 | 1.86 | Cast Iron |
| BC-40 | 4" | 96 | 165 | 233 | 121 | 5.40 | Cast Iron |

Tee Pipe

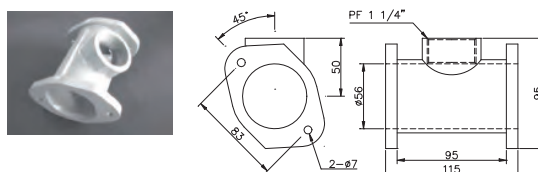
TP-01

Suitable for: RT-2, RT-3, RT-23, RT-33 series



TP-02

Suitable for: RT-4, RT-5, RT-6, RT-43, RT-63, RT-64 series



Adjustable Pressure & Vacuum Relief Valve



| Type | Thread | Range mbar | |
|-----------|--------|------------|-------------|
| PVC | RV-03 | PF-1 1/4" | 0 bis 300 |
| | RV-36 | PF-1 1/4" | 300 bis 600 |
| Aluminium | RV-A03 | PF-1 1/4" | 0 bis 300 |
| | RV-A36 | PF-1 1/4" | 300 bis 600 |

SIDE CHANNEL BLOWERS

Side Channel Blowers Selections Guide

Pressure

| Model | 0 mbar | 50 mbar | 75 mbar | 100 mbar | 125 mbar | 150 mbar | 175 mbar | 200 mbar | 225 mbar | 250 mbar | 300 mbar | 350 mbar | 400 mbar | 450 mbar | 500 mbar | 550 mbar | 600 mbar | 700 mbar | max. value | | | |
|----------|--------|---------|---------|----------|----------|----------|----------|----------|----------|----------|----------|----------|----------|----------|----------|----------|----------|----------|------------|-----------------------|------------------------|------------------------|
| | m³/min | KW | m³/min | KW | m³/min | KW | m³/min | KW | m³/min | KW | m³/min | KW | m³/min | KW | m³/min | KW | m³/min | KW | m³/min | KW | | |
| RT-1xxx | 0.8 | 0.38 | 0.20 | | | | | | | | | | | | | | | | | 60 mbar = 0.25 m³/min | | |
| RT-2xxx | 1.4 | 1.00 | 0.40 | 0.80 | 0.40 | 0.50 | 0.40 | | | | | | | | | | | | | | 130 mbar = 0.22 m³/min | |
| RT-3xxx | 2.4 | 1.90 | 0.75 | 1.65 | 0.75 | 1.40 | 0.75 | 1.20 | 0.75 | 0.90 | 0.90 | 0.65 | 0.90 | 0.35 | 1.30 | | | | | | 200 mbar = 0.35 m³/min | |
| RT-4xxx | 3.6 | 3.20 | 0.90 | 2.95 | 0.90 | 2.70 | 0.90 | 2.60 | 0.90 | 2.25 | 0.90 | 2.20 | 3.20 | 2.20 | 1.60 | 1.50 | 1.25 | 1.50 | 2.20 | 2.20 | 270 mbar = 0.35 m³/min | |
| RT-5xxx | 5.2 | 4.95 | 2.20 | 4.40 | 2.20 | 4.30 | 2.20 | 3.85 | 2.20 | 3.75 | 2.20 | 3.40 | 3.40 | 3.40 | 3.10 | 2.20 | 2.50 | 2.20 | | | 230 mbar = 2.60 m³/min | |
| RT-6xxx | 5.2 | 4.95 | 3.40 | 4.40 | 3.40 | 4.30 | 3.40 | 3.85 | 3.40 | 3.75 | 3.40 | 3.40 | 3.40 | 3.40 | 3.10 | 2.20 | 2.50 | 2.20 | | | 330 mbar = 0.75 m³/min | |
| RT-7xxx | 9.2 | 8.40 | 5.50 | 8.00 | 5.50 | 7.75 | 5.50 | 7.30 | 5.50 | 6.90 | 5.50 | 5.92 | 5.50 | 5.45 | 5.50 | 4.00 | 5.50 | | | | 300 mbar = 4.00 m³/min | |
| RT-8xxx | 9.2 | 8.40 | 7.50 | 8.00 | 7.50 | 7.75 | 7.50 | 7.30 | 7.50 | 6.90 | 7.50 | 6.20 | 7.50 | 5.92 | 7.50 | 4.95 | 7.50 | 4.00 | 7.50 | 1.85 | 7.50 | 400 mbar = 1.80 m³/min |
| RT-9xxx | 18.9 | 18.00 | 9.00 | 17.50 | 9.00 | 17.00 | 9.00 | 16.70 | 9.00 | 16.00 | 9.00 | 15.30 | 9.00 | 14.50 | 9.00 | 12.60 | 13.00 | 8.50 | 20.00 | 6.60 | 20.00 | 450 mbar = 5.00 m³/min |
| RT-23xxx | 1.5 | 1.18 | 0.75 | 1.00 | 0.75 | 0.90 | 0.75 | 0.75 | 0.75 | 0.65 | 0.75 | 0.53 | 0.75 | 0.40 | 0.75 | 0.30 | 0.75 | | | | | 240 mbar = 0.16 m³/min |
| RT-33xxx | 2.6 | 2.20 | 1.75 | 2.10 | 1.75 | 1.95 | 1.75 | 1.80 | 1.75 | 1.68 | 1.75 | 1.45 | 1.75 | 1.30 | 1.75 | 1.20 | 1.75 | 1.05 | 1.75 | 1.05 | 1.75 | 375 mbar = 0.32 m³/min |
| RT-43xxx | 3.7 | 3.40 | 3.40 | 3.20 | 3.40 | 3.00 | 3.40 | 2.95 | 3.40 | 2.75 | 3.40 | 2.55 | 3.40 | 2.30 | 3.40 | 2.15 | 3.40 | 2.00 | 3.40 | 1.60 | 3.40 | 495 mbar = 0.60 m³/min |
| RT-63xxx | 5.2 | 4.80 | 4.00 | 4.70 | 4.00 | 4.55 | 4.00 | 4.40 | 4.00 | 4.30 | 4.00 | 4.20 | 4.00 | 4.00 | 3.75 | 4.00 | 3.65 | 4.00 | 3.30 | 4.00 | 5.50 | 580 mbar = 1.15 m³/min |
| RT-83xxx | 9.6 | 9.10 | 7.50 | 9.00 | 7.50 | 8.80 | 7.50 | 8.70 | 7.50 | 8.40 | 7.50 | 8.30 | 7.50 | 8.15 | 7.50 | 7.80 | 7.50 | 7.60 | 7.50 | 6.40 | 11.00 | 700 mbar = 2.40 m³/min |

Values at 50 Hz.

Suction

| Model | 0 mbar | -50 mbar | -75 mbar | -100 mbar | -125 mbar | -150 mbar | -175 mbar | -200 mbar | -225 mbar | -250 mbar | -300 mbar | -325 mbar | -350 mbar | -400 mbar | -425 mbar | -450 mbar | max. value | | | | | |
|----------|--------|----------|----------|-----------|-----------|-----------|-----------|-----------|-----------|-----------|-----------|-----------|-----------|-----------|-----------|-----------|------------|------|-------|------|------------------------|------------------------|
| | m³/min | KW | m³/min | KW | m³/min | KW | m³/min | KW | m³/min | KW | m³/min | KW | m³/min | KW | m³/min | KW | m³/min | KW | | | | |
| RT-1xxx | 0.8 | 0.38 | 0.20 | | | | | | | | | | | | | | | | | | 70 mbar = 0.18 m³/min | |
| RT-2xxx | 1.4 | 0.98 | 0.40 | 0.72 | 0.40 | 0.41 | 0.40 | | | | | | | | | | | | | | 110 mbar = 0.22 m³/min | |
| RT-3xxx | 2.4 | 1.85 | 0.75 | 1.60 | 0.75 | 1.25 | 0.75 | 1.05 | 0.75 | 0.90 | 0.35 | 1.30 | | | | | | | | | 175 mbar = 0.35 m³/min | |
| RT-4xxx | 3.6 | 3.00 | 0.90 | 2.70 | 0.90 | 2.20 | 0.90 | 1.80 | 0.90 | 1.50 | 1.30 | 1.25 | 1.30 | 0.80 | 1.50 | | | | | | 220 mbar = 0.45 m³/min | |
| RT-5xxx | 5.2 | 4.25 | 2.20 | 3.70 | 2.20 | 3.30 | 2.20 | 2.90 | 2.20 | 2.30 | 2.20 | 1.80 | 2.20 | 1.95 | 2.20 | 1.25 | 2.20 | | | | 230 mbar = 1.20 m³/min | |
| RT-6xxx | 5.2 | 4.25 | 3.40 | 3.70 | 3.40 | 3.30 | 3.40 | 2.90 | 3.40 | 2.30 | 3.40 | 1.80 | 3.40 | 1.55 | 3.40 | 1.00 | 3.40 | | | | 270 mbar = 0.45 m³/min | |
| RT-7xxx | 9.2 | 8.30 | 5.50 | 8.00 | 5.50 | 6.50 | 5.50 | 5.80 | 5.50 | 5.30 | 5.50 | 4.50 | 5.50 | 4.00 | 5.50 | 2.80 | 5.50 | | | | 270 mbar = 2.00 m³/min | |
| RT-8xxx | 9.2 | 8.30 | 7.50 | 8.00 | 7.50 | 6.50 | 7.50 | 5.80 | 7.50 | 5.30 | 7.50 | 4.50 | 7.50 | 4.00 | 7.50 | 2.80 | 7.50 | 2.10 | 7.50 | 1.50 | 7.50 | 300 mbar = 1.50 m³/min |
| RT-9xxx | 18.9 | 18.00 | 9.00 | 17.10 | 9.00 | 16.50 | 9.00 | 15.80 | 9.00 | 14.80 | 9.00 | 14.10 | 9.00 | 12.50 | 13.00 | 8.50 | 13.00 | 6.80 | 13.00 | 5.20 | 20.00 | 350 mbar = 3.20 m³/min |
| RT-23xxx | 1.5 | 1.25 | 0.75 | 1.10 | 0.75 | 0.90 | 0.75 | 0.80 | 0.75 | 0.75 | 0.70 | 0.75 | 0.45 | 0.75 | 0.25 | 0.75 | | | | | | 200 mbar = 0.25 m³/min |
| RT-33xxx | 2.6 | 2.20 | 1.75 | 2.00 | 1.75 | 1.85 | 1.75 | 1.65 | 1.75 | 1.50 | 1.75 | 1.35 | 1.75 | 1.20 | 1.75 | 1.05 | 1.75 | 0.68 | 1.75 | 0.45 | 1.75 | 280 mbar = 0.25 m³/min |
| RT-43xxx | 3.7 | 3.40 | 3.40 | 3.05 | 3.40 | 2.70 | 3.40 | 2.60 | 3.40 | 2.40 | 3.40 | 2.30 | 3.40 | 2.00 | 3.40 | 1.75 | 3.40 | 1.60 | 3.40 | 1.20 | 3.40 | 355 mbar = 0.40 m³/min |
| RT-63xxx | 5.2 | 4.70 | 4.00 | 4.40 | 4.00 | 4.20 | 4.00 | 3.75 | 4.00 | 3.55 | 4.00 | 3.30 | 4.00 | 3.05 | 4.00 | 2.80 | 4.00 | 2.50 | 4.00 | 2.30 | 4.00 | 420 mbar = 0.80 m³/min |
| RT-83xxx | 9.6 | 8.80 | 7.50 | 8.60 | 7.50 | 8.30 | 7.50 | 8.15 | 7.50 | 7.80 | 7.50 | 7.60 | 7.50 | 7.20 | 7.50 | 6.80 | 7.50 | 6.70 | 7.50 | 6.40 | 7.50 | 450 mbar = 1.20 m³/min |

Values at 50 Hz.

BIBUS Technology - network of competencies

Headquarters

Switzerland
BIBUS AG
Allmendstrasse 26
8320 FEHRALTORF
Tel. +41 44 877 50 11
Fax +41 44 877 50 19
E-mail: info.bag@bibus.ch
www.bibus.ch

Switzerland
BIBUS HYDRAULIK AG
Allmendstrasse 26
8320 FEHRALTORF
Tel. +41 44 877 52 11
Fax +41 44 877 52 19
E-mail: info.bhag@bibus.ch
www.bhag.bibus.ch

Germany
SAUER BIBUS GmbH
Lise-Meitner-Ring 13
89231 NEU-ULM
Tel. +49 731 18 96 0
Fax +49 731 18 96 199
E-mail: info@sauerbibus.de
www.sauerbibus.de

Subsidiaries

Austria
BIBUS Austria GmbH
Eduard Klinger-Strasse 12
3423 ST. ANDRÄ-WÖRDERN
Tel. +43 2242 33 388
Fax +43 2242 33 388 10
E-mail: info@bibus.at
www.bibus.at

Belarus
BIBUS (BY) COOO
8th Per. Ilyicha 13a, office 2.1
246013 GOMEL
Tel. +375 232 39 09 10
Fax +375 232 39 59 02
E-mail: info@bibus.by
www.bibus.by

Bulgaria
BIBUS Bulgaria Ltd.
2 Blvd.Prof.Tzvetan
Lazarov, Floor 2
1574 SOFIA
Tel. +359 885 494 275
Fax +359 292 732 64
E-mail: info@bibus.bg
www.bibus.bg

China
BIBUS Shanghai Mec., Ltd.
Rm-3b, Pinghe Sq, Lane 3
123 Yanping Road, Jing'an
200042 SHANGHAI
Tel. +86 21 624 606 86
Fax +86 21 624 606 86
E-mail: info@bibus.cn
www.bibus.cn

Croatia
BIBUS Zagreb d.o.o.
Anina 91
HR-10000 ZAGREB
Tel. +385 1 381 80 04
Fax +385 1 381 80 05
E-mail: bibus@bibus.hr
www.bibus.hr

Czech Republic
BIBUS s.r.o.
Videnska 125
639 27 BRNO
Tel. +420 5 47 125 300
Fax +420 5 47 125 310
E-mail: bibus@bibus.cz
www.bibus.cz

Denmark
A/S H. SINDBY & Co
Bommerhavevej 41
Slelde
7100 VEJLE
Tel. +45 75 88 21 22
Fax +45 75 88 22 40
E-mail: sindby@sindby.dk
www.sindby.dk

France
BIBUS France S.A.S.
ZI du Chapotin
233, rue des Frères Voisin
69970 CHAPONNAY
Tel. +33 4 7896 80 00
Fax +33 4 7896 80 01
E-mail: contact@bibusfrance.fr
www.bibusfrance.fr

Germany
BIBUS GmbH
Lise-Meitner-Ring 13
DE-89231 NEU-ULM
Tel. +49 731 20 76 90
Fax +49 731 20 76 96 20
E-mail: info@bibus.de
www.bibus.de

Great Britain
BIBUS (UK) Ltd
20 Soho Mills
WOOBURN GREEN
Bucks
HP10 0PF
Tel. +44 1628 533 300
Fax +44 1628 533 377
E-mail: info@bibus.co.uk
www.bibus.co.uk

Hungary
BIBUS Kft
BUDAPEST
Ujhegyi ut 2
1103
Tel. +36 1 265 27 33
Fax +36 1 264 89 00
E-mail: info@bibus.hu
www.bibus.hu

Poland
BIBUS MENOS Sp. z o.o.
ul. Spadochroniarzy 18
80-298 GDANSK
Tel. +48 58 660 95 70
Fax +48 58 661 71 32
E-mail: info@bibusmenos.pl
www.bibusmenos.pl

Portugal
BIBUS Portugal, Lda
Rua 5 de Outubro, 5026
4465-079 S.M. INFESTA, PORTO
Tel. +351 22 906 50 50
Fax +351 22 906 50 53
E-mail: info@bibus.pt
www.bibus.pt

Romania
BIBUS SES SRL
Pestalozzi Street 22
300155 TIMISOARA
Tel. +40 256 200 500
Fax +40 256 220 666
E-mail: office@bibus.ro
www.bibus.ro

BIBUS EUROFLUID SRL
Str. Scoala de Inot, Nr. 2B/20
550005 SIBIU
Tel. +40 26 920 67 50
Fax +40 26 920 62 75
E-mail: office@bibuseurofluid.ro
www.bibuseurofluid.ro

Russia
BIBUS o.o.o.
Izmailovsky prospect 2A
ST. PETERSBURG
190005
Tel. +7 812 251 62 71
Fax +7 812 251 90 14
E-mail: info@bibus.ru
www.bibus.ru

Slovakia
BIBUS SK s.r.o.
Trnavska 31
949 01 NITRA
Tel. +421 37 777 79 11
Fax +421 37 777 79 19
E-mail: sale@bibus.sk
www.bibus.sk

Slovenia
INOTEH d.o.o.
K Železnici 7
SI-2345 BISTRICA OB DRAVI
Tel. +386 2 665 11 31
Fax +386 2 665 20 81
E-mail: info@inoteh.si
www.inoteh.si

Spain
BIBUS SPAIN, S.L.
Avda. Ricardo Mella, 117D
36330 VIGO
Tel. +34 986 24 72 86
Fax +34 986 20 92 47
E-mail: info@bibus.es
www.bibus.es

Ukraina
BIBUS Ukraine TOV
Ul. Mashinobudivnykiv 5a
CHABANY, Kyiv region
08162
Tel. +380 44 545 44 04
Fax +380 44 545 54 83
E-mail: info@bibus.com.ua
www.bibus.com.ua

Vietnam
BIBUS Vietnam Co., Ltd.
No 171-173, Khuong Trung New
Road
Thanh Xuan District
HANOI
Tel. +84 4 356 834 30
Fax +84 4 356 834 29
E-Mail: info@bibus.vn
www.bibus.vn



 **BIBUS AG**
 Other **BIBUS** locations

BIBUS environmental technology 01-2011 / EN

BIBUS®
LESS SUPPORTING YOUR SUCCESS