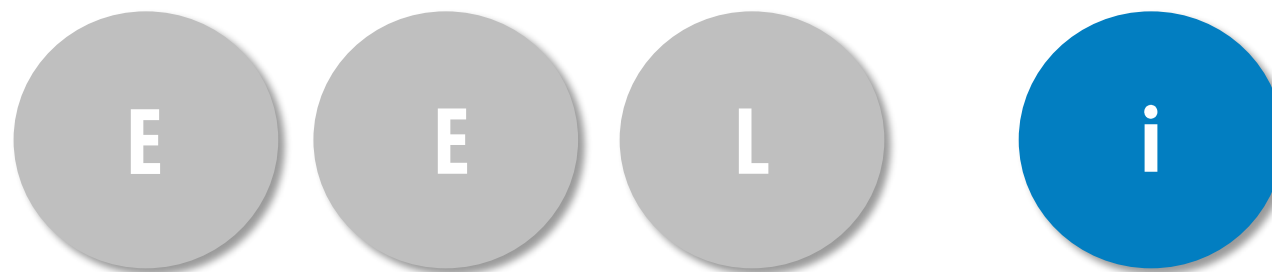


# EXCELLENT ELECTRIC ACTUATOR SOLUTIONS



# A REVOLUTIONARY NEW CONCEPT

The intelligent actuator from Bansbach  
with integrated controller



**I**nternal stroke  
limitation

**S**lim design and  
convincing look

**I**nternal overcurrent  
protection

**H**igh forces,  
up to 10.000 N

**I**nternal heat  
protection

**L**ow energy  
consumption

**I**nterconnection  
up to 128 units

**I**ndustrial interface  
MODBUS RTU on RS485

**P**lug & Play solution  
with iConnect box

**6** Configurations  
available

**S**oftware for  
easy setup

**E**asy installation and  
maintenance-free

# VARIOUS SEGMENTS

Bansbach delivers solutions for applications in various industries



**Industrial Automation**



**Rehab & Fitness**



**Building technology**



**Special vehicles**



**Maritime**

# INDUSTRIAL AUTOMATION

Electric in-line actuators where high forces are required and time matters



MODBUS RTU

Misc. grease  
options

Optional  
stainless steel

Shielded cable

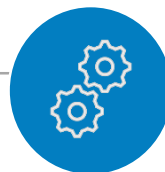
Optional IP classes  
IP66/68/69

# INDUSTRIAL AUTOMATION

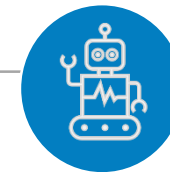
Electric in-line actuators where high forces are required and time matters



- Manufacturing
- Production lines
- OEM applications



- Transportation
- Paper mills
- Looms for clothing industry



- Food processing
- Packaging machines
- Agricultural applications

# REHAB & FITNESS

Electric in-line actuators with sleek,  
clean lines for optimal integration



Special  
brackets

Various stroke  
lengths

Optional low-  
noise version

Custom colors

Medical  
certification  
EN60.601

# REHAB & FITNESS

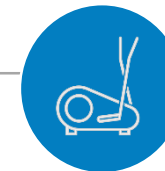
Electric in-line actuators with sleek,  
clean lines for optimal integration



- Wheelchair - stand-up aid
- Wheelchair – height adjustable footrest
- Mobile Therapy chair



- Patient lifter - raising/ lowering
- Bathtub lift
- Shower Chair



- Rehabilitation and massage table
- Various Fitness devices

# BUILDING TECHNOLOGY

The perfect solution where perfect  
design and interconnection is  
required



Customized  
colors

Optional  
stainless steel

Optional low-  
noise version

Various stroke  
lengths

Control up to 128  
units

Special  
brackets

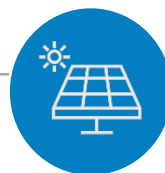


# BUILDING TECHNOLOGY

The perfect solution where perfect design and interconnection is required



- Regulation of sun protection slats
- Regulation of ventilation slats
- Opening and closing of a pergola



- Opening and closing of windows
- Regulation of sun protection
- External and internal shading



- Opening and closing of facades
- Opening and closing of roof hatches
- Electric Parasol control

# SPECIAL VEHICLES

A preferred solution for mobile  
applications



Customized  
colors

Optional  
stainless steel

Optional  
low-noise  
version

Various  
stroke  
lengths

Special  
brackets

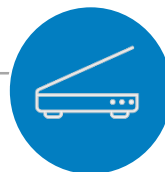
Optional IP classes  
IP66/68/69

# SPECIAL VEHICLES

A preferred solution for mobile  
applications



- Opening and closing trunks
- Positioning of seats
- Controlling platforms on trucks



- Wheelchair ramp
- Devices for easy entry
- Lifts



- Height adjustable forklifts
- Lowering or raising

# MARITIME

No risk of oil leaks compared to hydraulic systems...



Low maintenance

Various stroke  
lengths

Misc. grease  
options

Optional  
stainless steel

Optional IP classes  
IP66/68/69

# MARITIME

No risk of oil leaks compared to hydraulic systems...



- Passarelle for yachts
- Lowering or raising of ground platforms
- Yacht cranes



- Opening and closing hatches, windows, doors,
- Sunroofs, covers and storage boxes
- Setting of sunbeds and chairs



- Table adjustment
- TV and bed lift
- Support for bathing ladder

# FEATURES

	SDB	SDH	SDP	SPP	SBS	MDO
EEL-i configurations:	Single Direction Basic	Single Direction Hall	Single Direction Position	Single Position Position	Single BUS Status	(Synchronization) Multiple Direction Override
Configuration letter:	A	B	C	D	E	F
Voltage +12/24 VDC	✓	✓	✓	✓	✓	✓
Direction: IN/OUT	✓	✓	✓	–	–	✓
Output: Ref. 5/10 VDC	–	–	–	✓	–	–
Input: STOP	–	–	–	–	✓	–
Input: Override	–	–	–	–	–	✓
Output: Error	–	–	–	–	✓	–
Input: Position (analog)	–	–	–	✓	–	–
Output: Position (analog)	–	–	✓	–	–	–
In-/output: STOP/Pos. OK	–	–	–	✓	–	–
Output: Hall	–	✓	–	–	–	–