

PRODUCTS GUIDE 2015

Complete range of electric wheel solutions



ez-Wheel®

The Electric Wheel

Company

ez-Wheel SAS is an innovative technology company founded in 2009.

Registered in France with a capital of 450,910€, our company develops a range of autonomous electric wheels, dedicated to the industry. Our solutions assist operators in moving heavy loads.

Located in Charente, in the heart of the Mechatronic Valley, ez-Wheel benefits from geographical and economical opportunities, with a strong network of local industrial players.

ez-Wheel innovative technology and industrial know-how result from the combination of well-known technologies and proven methodologies.



ez-Wheel's Head Office, St-Michel - FRANCE.

Solutions

The technology proposed by ez-Wheel is the fastest, simplest and most advanced solution offering electric traction to mobile materials in all industries, including but not limited to : medical environment, food industry, and heavy load handling.

The solution fully integrates into a wheel all the functions of a conventional power train: high-end electric motor, high energy and super long life batteries, power controller featuring state of the art motor control, battery management and wireless interface.

ez-Wheel products are ready to operate in outdoor or indoor conditions, over an extended temperature range. All the components including the battery are designed to withstand up to 5 years of operation without any maintenance required.

ez-Wheel wireless technology removes all the peripherals, wire sets and connectors from the chassis, making the integration of our solutions a fast and easy task compared to other alternatives.



ez-Wheel's products range.

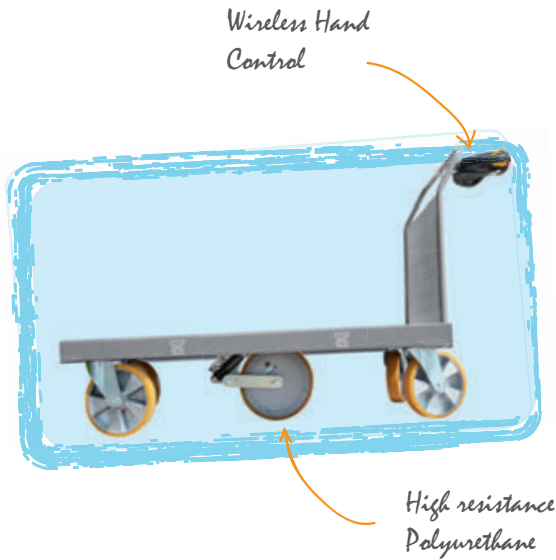
The first electric wheel integrating motor and batteries

ez-Wheel proposes the first industrial electric wheel featuring embedded motor and batteries. This revolutionary solution can quickly and easily power any rolling material dedicated to load handling or people transportation.



ez-Wheel®

Market Segments



LOAD HANDLING

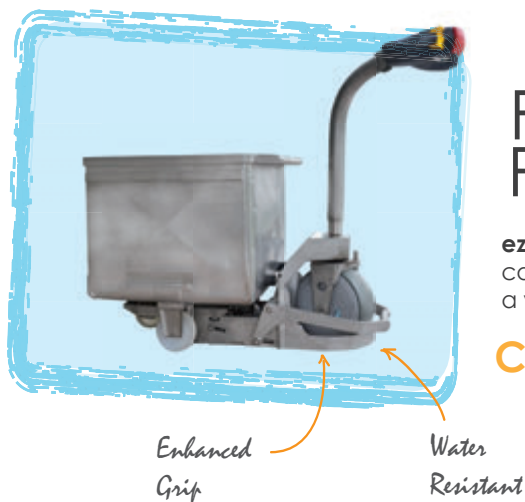
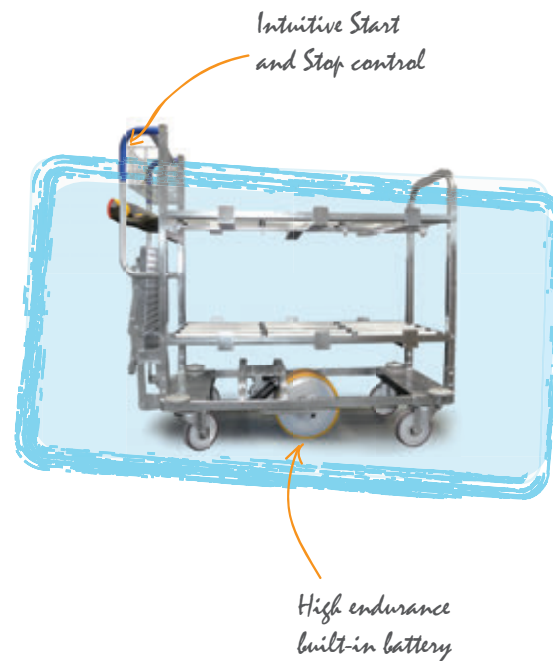
ez-Wheel self-propelled electric wheels are ideal for handling equipment and moving heavy loads.

SAFETY + PRODUCTIVITY

LOGISTICS

ez-Wheel solutions are ideal for picking trolleys and platform trucks designed for hundreds of starts and stops per working shift.

EFFICIENCY + FLEXIBILITY



FOOD PROCESSING

ez-Wheel sealed and waterproof products can operate in severe environments over a wide temperature range.

COMPATIBILITY + RELIABILITY

*Ergonomic
Hand control*



*Water
resistant*

MEDICAL

ez-Wheel self propelled electric wheels are ideal to preserve the health capital of your staff.

SAFETY + RELIABILITY

*Versatile throttle
control*

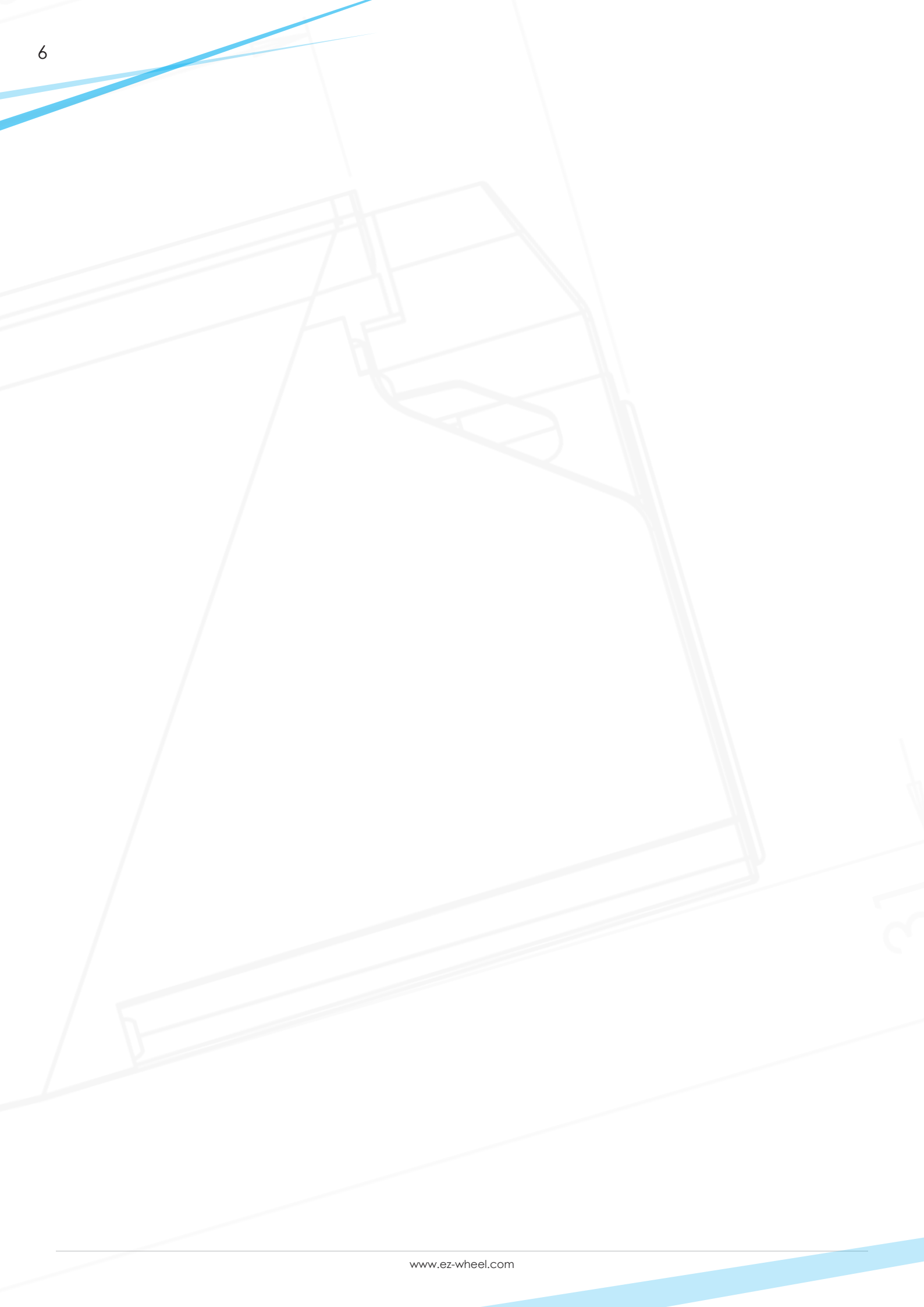


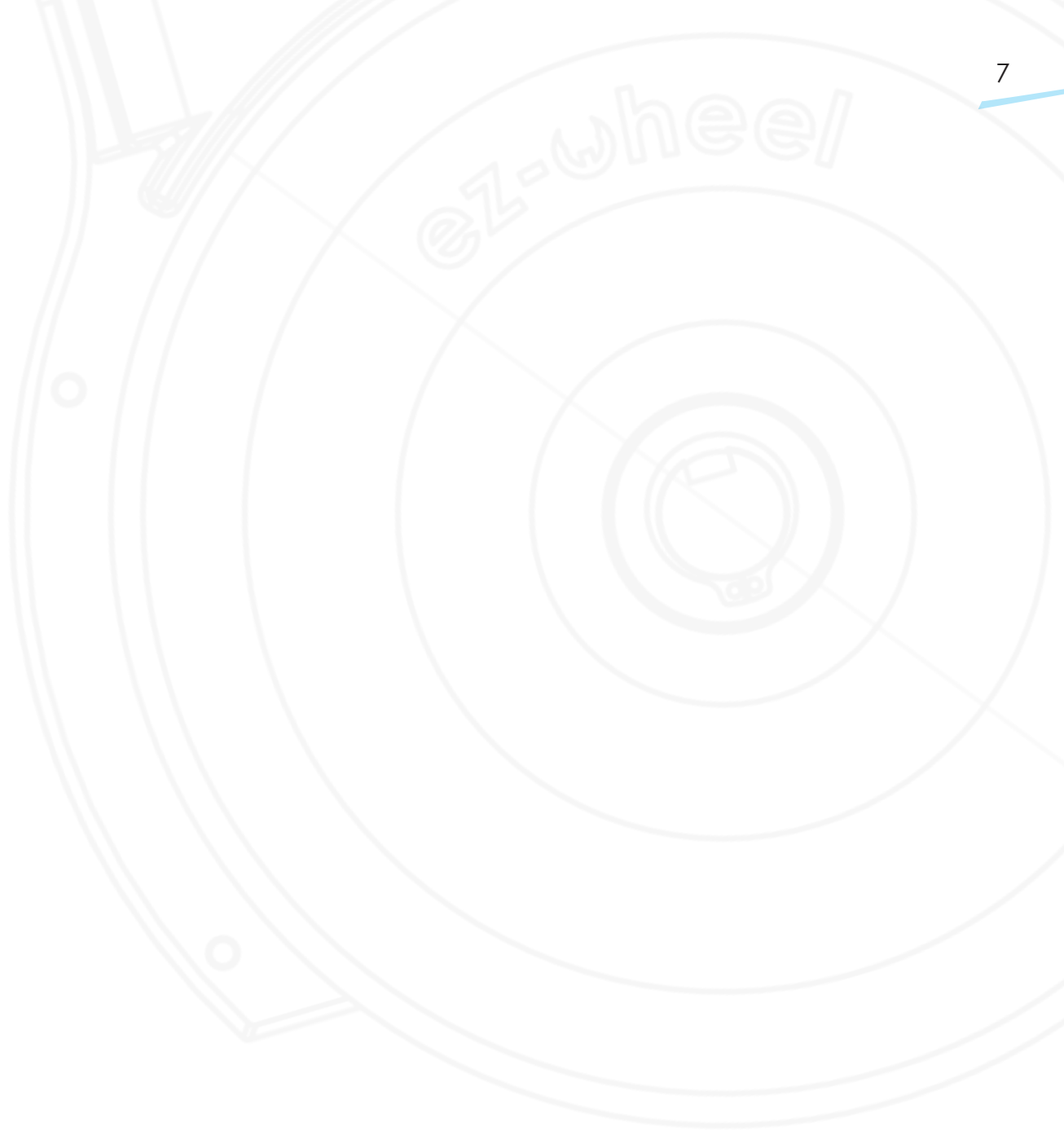
*A tyre for each
kind of ground*

OUTDOOR

ez-Wheel products can be used outside on bitumen or turf, as well as chaotic terrain. ez-Wheel outdoor range offers a solution for each mobility need.

COMPATIBILITY + ROBUSTNESS





WHEELS

Series 300

The UNIVERSAL Series

The Series 300 electric wheels can be immediately installed on the chassis of any vehicles or wheeled equipment. No electrical connection is required as the wheel is self-powered by the built-in battery and can be remotely controlled.

Series 300 Main specifications

Speed	0 to 12 km/h
Nominal power	200 W (S1 at 6 km/h)
Battery capacity	240 Wh
Torque peak	55 Nm
	35 daN of force



Ref. **ezW300M**

Main specifications

Format/Diameter	304 mm
Type of tyre	70 sh. A polyurethane
Suitable for	Hospital equipment Stretchers & Indoor mobile equipment



Ref. **ezW300S**

Main specifications

Format/Diameter	300 mm
Type of tyre	65 sh. A polyurethane
Suitable for	Logistics equipment Industrial trailer



Ref. **ezW300F**

Main specifications

Format/Diameter	304 mm
Type of tyre	Enhanced grip polyurethane
Suitable for	Pusher/Puller in food processing industry



Ref. **ezW300I**

Main specifications

Format/Diameter	300 mm
Type of tyre	80 sh. A polyurethane
Option	Regen
Suitable for	Industrial hand trucks Logistics equipment



Option **/CC**

Main specifications

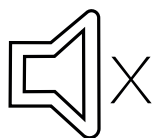
Characteristics	Rotating contact with static cable connection
Available interfaces	Charge plug Serial Link
Compatible with	Regen Option Wireless

WHEEL'S CHARACTERISTICS



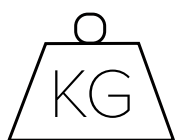
MAINTENANCE-FREE

All components are designed for a maintenance-free lifespan of up to 5 years. The very long-life batteries used in the wheel can sustain thousands of use and recharging cycles.



QUIET

The motor technology and mechanical transmission are designed to run extremely quietly and vehicles fitted with them will not generate more noise pollution.



UP TO 1 TON

With peak torque of 55 Nm, the electric motor develops a pushing force of 35 daN. It provides exceptional clearance capability and equipment fitted with the motor can carry loads of several hundred kg.

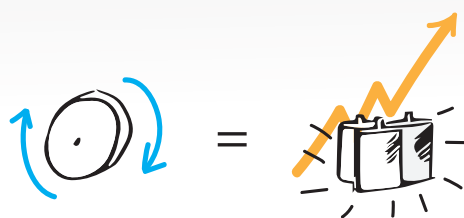


REGEN OPTION

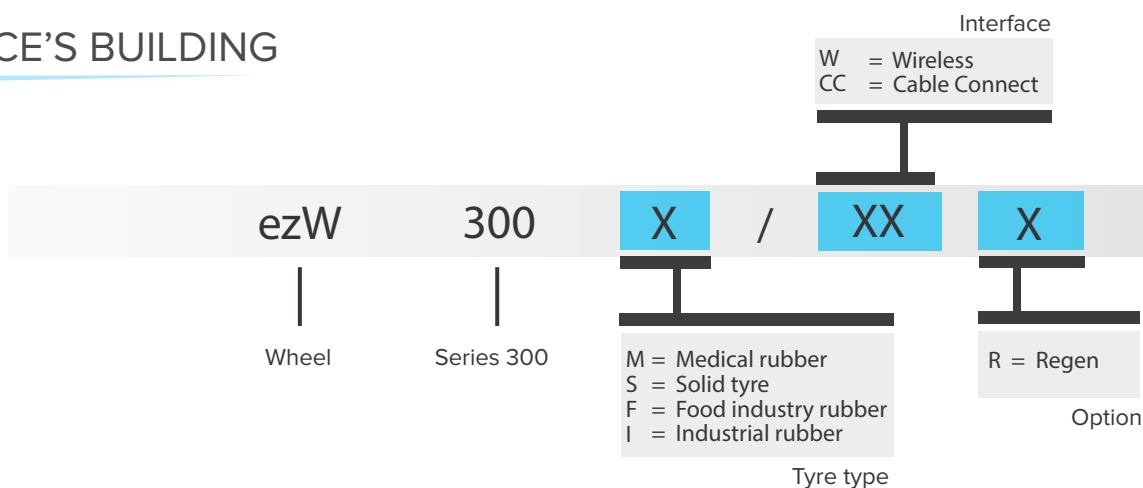
Regenerative charging is an exclusive function developed by ez-Wheel. It enables the built-in battery to be recharged with the wheel rotation kinetic energy.

The wheel can be charged while rotating at a speed between 3 and 12 km/h, for instance during the towing phase of a trolley.

In this phase, the wheel switches into the charging mode automatically as soon as rotation is detected. The wheel then presents a resisting (braking) torque and the braking energy recovered by the motor is injected back into the battery.



REFERENCE'S BUILDING



AVAILABLE WHEELS & OPTIONS

Wheels/References	Designation - Series	Type
ezW300M	Series 300 wheel	Medical rubber
ezW300S	Series 300 wheel	Solid tyre
ezW300F	Series 300 wheel	Food industry rubber
ezW300I	Series 300 wheel	Industrial rubber

Available Versions/Options

/W	Wireless
/WR	Wireless + Regen
/CC	Cable Connect (wireless and serial link* included)
/CCR	Cable Connect + Regen (wireless and serial link* included)

* See page 23

Series 10"

The ALL TERRAIN solution

Ref. ezW10N

The nude hub can be fitted with any 4.00*10" inflated tyre.



Series 10" Main specifications

Format/Dia/eter	10"
Speed	0 to 18 km/h
Nominal power	250 W (S1 at 6 km/h)
Battery capacity	240 Wh
Torque peak	55 Nm

Ref. ezW10R

The ezW10R is suitable for delivery carts, personal carriers, urban pedestrian vehicles. The wheel is equipped with a road tyre 100-80-10.

Ref. ezW10G

The ezW10G is suitable for wheelbarrows, devils, easel trolley, storage carts. The wheel is equipped with a thread pattern tyre 120-90-10.

Ref. ezW10T

The ezW10T is suitable for street clearing carts, urban vehicles. The wheel is equipped with a trailer type tyre 4.00*10".

Ref. ezW10A

The ezW10A is suitable for weeder, off-road machine, mobile equipment on chaotic surface. The wheel is equipped with an agriculture tyre 4.00*10".



A Tyre solution

For each kind of ground

WHEEL'S CHARACTERISTICS



IMMEDIATE FITTING

The self-propelled ez-Wheel can be fitted immediately on any vehicle chassis or mobile equipment. No electrical connection is needed, since the wheel is self-powered by the built-in battery and driven by wireless communication.



ALL TERRAIN SOLUTION

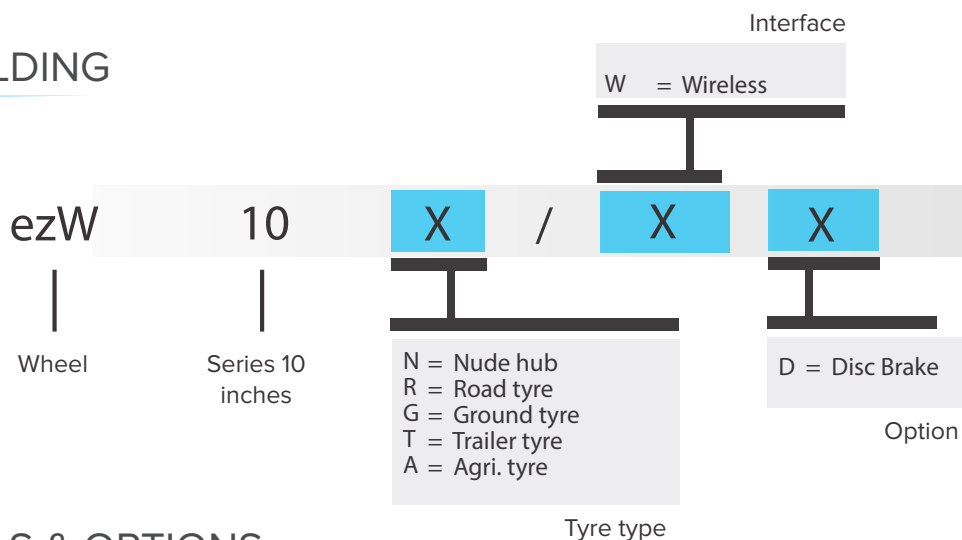
The high torque of the embedded motor allows running on any type of ground. With the water resistant and ruggedized envelope, it makes a perfect fit for severe outdoor environments.



MAINTENANCE-FREE

All components are designed for a maintenance-free lifespan of up to 5 years. The very long-life batteries used in the wheel can sustain thousands of use and recharging cycles.

REFERENCE'S BUILDING



AVAILABLE WHEELS & OPTIONS

Wheels/References	Designation - Series	Type
ezW10N	Series 10" wheel	Nude hub
ezW10R	Series 10" wheel	Road tyre
ezW10G	Series 10" wheel	Ground tyre
ezW10T	Series 10" wheel	Trailer tyre
ezW10A	Series 10" wheel	Agriculture tyre

Available Versions/Options

/W	Wireless
/WD	Wireless + Disc brake holder

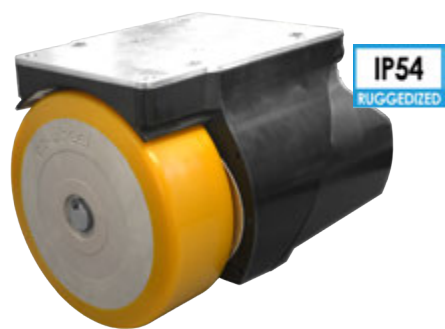
Series 160

The MODULAR Series

The Series 160 wheels incorporate motor and batteries in an extremely small footprint. The reduced height allows the wheels to be installed under very low chassis.

Series 160 Main specifications

Speed	0 to 5 km/h
Nominal power	70 W (S1 at 4 km/h)
Battery capacity	70 Wh (1 battery) 140 Wh (2 batteries)
Torque peak	17 Nm 20 daN of force



Ref. ezW160I

Main specifications

Format/Diameter	158 mm
Type of tyre	70 sh. A polyurethane
Option	0/1/2 batteries Brake Encoder
Suitable for	Industrial hand trucks Roll carts Picking trolleys

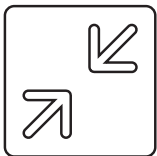


Ref. ezW160M

Main specifications

Format/Diameter	158 mm
Type of tyre	70 sh. A polyurethane
Option	0/1/2 batteries Brake Encoder
Suitable for	Medical beds Service trolleys Operating tables

WHEEL’S CHARACTERISTICS



REDUCED SPACE REQUIREMENT

The Series 160 integrates motor and batteries in an extremely compact format. The wheel is designed with reduced height to fit any low chassis. The robust housing protects all components from knocks and splashing.



HIGH COMPATIBILITY

The self-propelled ez-Wheel can be fitted immediately on any vehicle chassis or mobile equipment. The wheel is self-powered by the built-in battery and controlled by wired communication.

Two smart Options

• Encoder Option

The encoder option allows using advanced speed control features such as:

- Speed limiting
- Free wheeling
- Soft deceleration



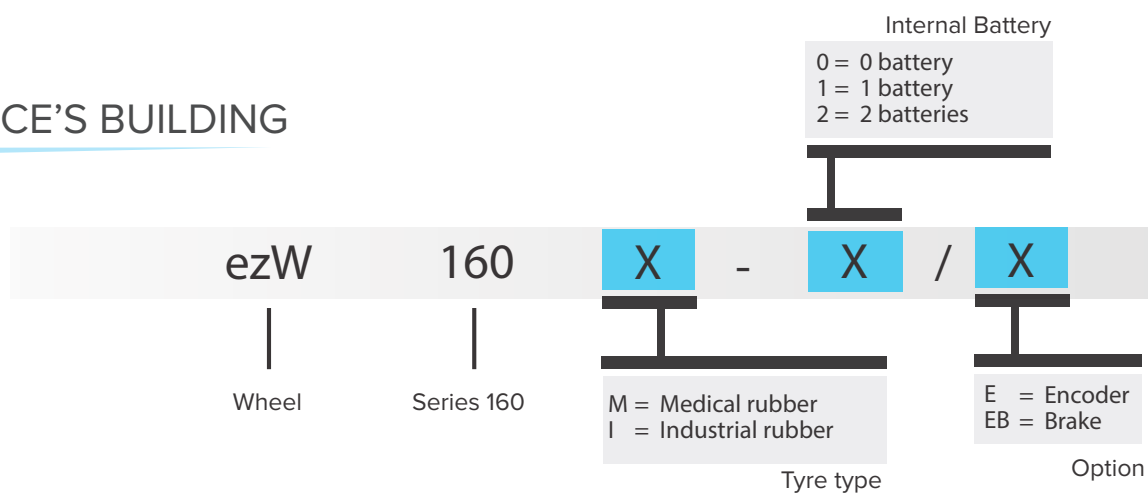
• Brake Option

The brake option embeds an electro-mechanical parking brake that allows:

- Stopping the wheel
- Locking the system when not in use
- Immobilizing in case of emergency



REFERENCE'S BUILDING



AVAILABLE WHEELS & OPTIONS

Wheels/references	Designation - Series	Type
ezW160I	Series 160 wheel	Industrial rubber
ezW160M	Series 160 wheel	Medical rubber

Available Versions

-0	For external battery
-1	One internal battery
-2	Two internal batteries

Options

/E	Encoder
/EB	Encoder + Brake

Series 200

The POWERFUL

POWERFUL
PERFORMANT
SIMPLE

Series 200 wheels are a concentration of power in an extremely small footprint for the handling of heavy loads in industry and automated machinery.

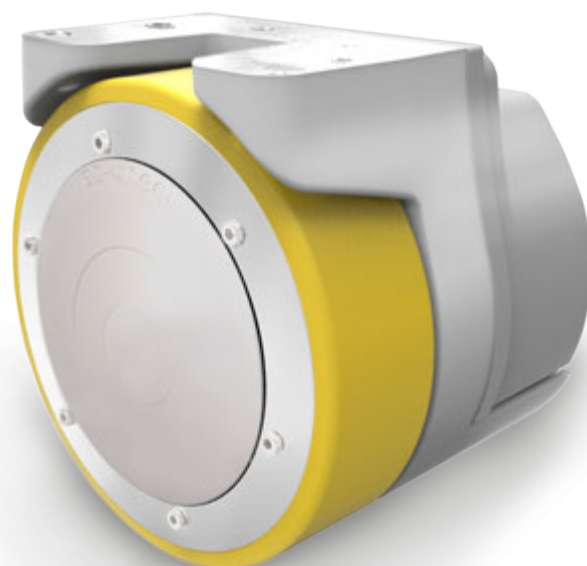
This electric wheel is dedicated to tough usage. Its performances manage easily heavy loads, repeated movements or continuous operation.

Series 200 wheels are adapted to:

- Heavy load transportation
- AGVs
- Industrial vehicles as well as any mobile industrial equipment up to 1 ton moved

Main specifications

Format/Diameter	200 mm
Type of tyre	92 sh.A polyurethane
Pushing force	100 daN /moves 3t
Max vertical load	Support up to 1000 kg
Motor power	Motor deceleration
Options	Brake
	Wireless
	CAN bus
	Ext/Int battery



Series 125

The ULTRA COMPACT

COMPACT
SIMPLE
UNIVERSAL

The Series 125 wheel is the most compact model among ez-Wheel products.

This product has extremely reduced dimensions and provides an electric assistance solution for small mobile furniture or the transfer of patients in a hospital.

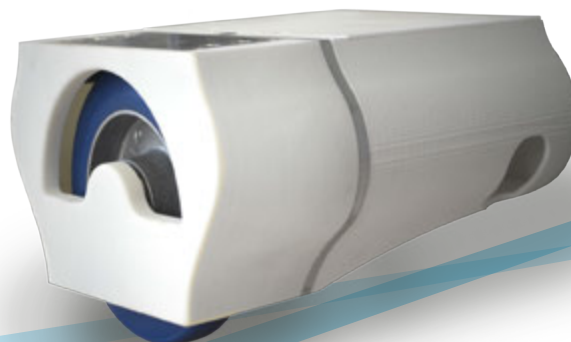
Series 125 wheels are adapted to:

- Mobile transfer equipment
- Support of patients in a hospital environment (hospital beds, transfer chairs, hoists) and handling carts (for laundry, meals and medication).

The Series 125 meets the safety and hygiene requirements specific to hospitals.

Main specifications

Format/Diameter	125 mm
Type of tyre	70 sh.A polyurethane
Pushing force	11 daN / moves 300kg
Max vertical load	Support up to 100 kg



ez-Config

from ez-Wheel®

ez-Config is the heart of the ez-Wheel solutions. Thanks to its software configurations, wheels and hand controls may be programmed and perfectly adapted to any situation.

DIAGNOSE
CONFIGURATE
SAVE
MODIFY



ez-Config support

Features

- Simple programming
- Intuitive interface
- Accurate data
- Compatibility: Windows XP and above
- English Interface

AVAILABLE VERSIONS

References	Designation	Suitable for:
ez-Config	Configuration software dedicated to: system parameters.	Series 300 - Series 10" and Smart controls
ez-Config/160	Configuration software dedicated to: system parameters.	Series 160

1

Evaluate and understand the working place characteristics.



2

Open ez-Config and connect ez-Wheel devices*.



*ez-Wheel devices with USB port

CONFIGURATION PARAMETERS

The user parameter window allows to set the configuration parameters. Different settings are possible:

- forward and reverse speed
- acceleration curve
- electric assistance duration at starting
- motor brake and deceleration
- etc.

Km/h

SPEED
DEFINITION

Define the speed of the wheel.
Forward/backward speed can be differentiated.



ACCELERATION MODE

Set up the acceleration according to your needs.
e.g. Slow patient moving; fast for picking trolley.



DECELERATION MODE

Choose the deceleration behaviour when releasing the hand control.
e.g. motor brake to apply motor resistance, free wheel to continue rolling.



START TIME
LIMITER

Limit the motor drive time on start up.
When the hand control is released the wheel goes back to selected deceleration mode.

IOs

INPUTS
OUTPUTS

Configure external interfaces for the display, buttons, external supply...

Other configuration

parameters available !

3

Configure wheels and accessories.



4

Save parameters.



CONTROLS & ACCESSORIES

ez-Wheel®

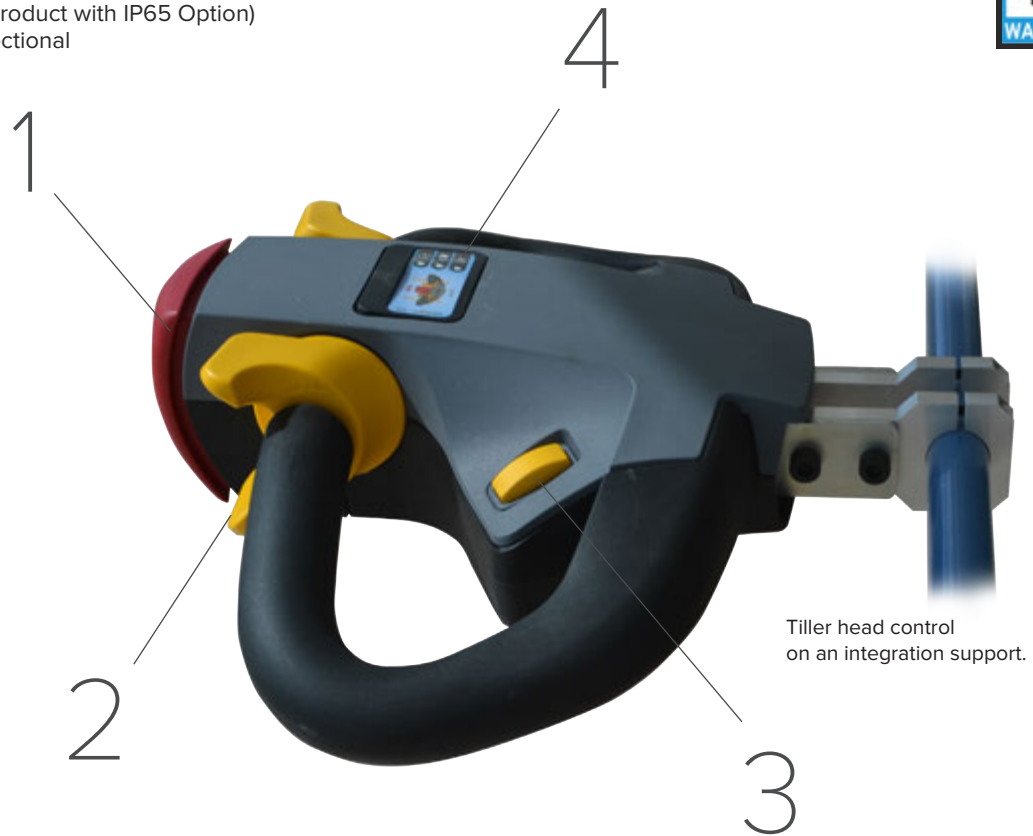
Smart controls

WIRELESS TILLER HEAD CONTROL

Ref. ezRTH/W

Ref. ezRTH/W/IP (product with IP65 Option)

WIRELESS - Bi-directional



Tiller head control
on an integration support.

Description:

It ensures a proper handling of equipment thanks to ergonomic shapes and well organised commands. The integrated wireless interface allows a simple and quick integration on rolling material.

Other functions:

The interface remotely displays the battery level of the wheel and the system status.

Features:

- Stop button (1)
- Progressive accelerator (2)
- ON/OFF button (3)
- HMI label (4)
- IP65 available as an option

SECURE - WIRELESS

ERGONOMIC



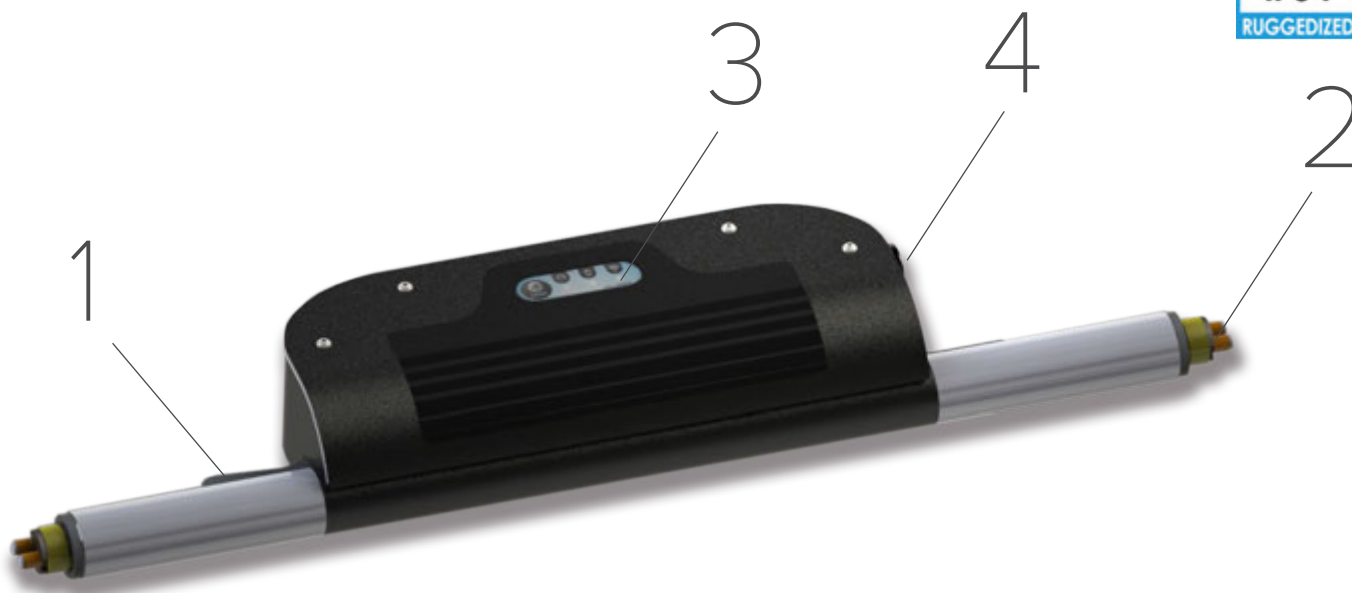
Suitable for:

- Series 300
- Series 10"

PUSH PULL SENSITIVE CONTROL

Ref. **ezRPP/W**

WIIRELESS - Bi-directional - Sensitive sensor



Description:

It ensures a natural handling of equipment thanks to sensitive sensors, ergonomic shapes and well organised commands. The integrated wireless interface allows a simple and quick integration on rolling material.

Other functions:

The interface remotely displays the battery level of the wheel and the system status.

Features:

- Dead-man switches for activation (1)
- Pressure sensors in Push and Pull directions (2)
- Battery and status indicator (3)
- ON/OFF button (4)
- IP 54



Suitable for:

- **Series 300**

Push Pull sensitive control
on an integration support.



ez-Box

The ez-Wheel® interface

The wireless interface ez-Box (1) is used to remotely control one or two wheels (2).

The wheel control is ensured by a wired control (3) connected to the ez-Box wireless interface.

A switch (4) can be used to start and stop the system.

Wireless ez-Box Main specifications

Communication Protocol	Wireless 2.4GHz IEEE 802.15.4
Battery	Ni-MH rechargeable
IP Index	IP54
Dimensions	124 x 75 x 27 mm

2 WHEELS
SERIES 300 & 10”
Page 08 - 11



ez-Box mounted on a tool trolley.



ez-Box used for a production machinery.

1 WIRELESS
INTERFACE
Ref. ezR44IN/W



Suitable for:

- Series 300
- Series 10”

WIRED
CONTROLS
Page 24 - 25

3



SWITCHES
Page 25

4



The interface remotely displays the battery level of the wheel and the system status.

The ez-Box can be mounted on a chassis with fixing collars, or on a drilled panel with bolts.

ez-Box

with SERIAL LINK

The serial link is used in ez-Wheel solutions for insuring a wired communication recommended for noisy environments or wireless restricted areas.

The wired communication uses a serial protocol to ensure an effective bi-directional dialogue between the wheel (2) and the ez-Box (1).

The Serial link is suitable to control one wheel Series 300/CC featuring cable connect.

Serial ez-Box Main specifications

Communication Protocol	Serial UART
Battery	Ni-MH rechargeable
IP Index	IP54
Dimensions	124 x 75 x 27 mm

2

WHEELS
SERIES 300/CC
Page 08 - 09



1

INTERFACE
with SERIAL LINK
Ref. ezR44IN/U



Suitable for:

- Series 300/CC

CHARGER
Page 28 - 29

5



CABLES
Page 27 & 29



3. WIRED CONTROLS
Page 24 - 25

4. SWITCHES
Page 25






The wired connection allows recharging the wheel and the ez-Box at the same time, using a standard ez-Wheel charger (5) and a Y cable.

Wired Controls



HAND CONTROLS WITH SWITCHES ▲▼

DESIGNATION	CHARACTERISTICS	WIRED TO
 <p>Rotating Handle with Button & Display ▲▼ ezARH-BD</p>	<p>The ezARH-BD controls the speed in both directions (forward and backward) with a progressiveness following the hand control position. The control is equipped with a Display and a Button.</p> <ul style="list-style-type: none"> • Cable required* 	<ul style="list-style-type: none"> • Series 160 • ez-Box
 <p>Tiller Head ▲▼ ezATH</p>	<p>The ezATH command is a tiller head type control. It ensures a proper handling of equipment thanks to ergonomic shapes and well organized commands. It can control the speed in both directions (forward and backward). For a safe action, the control includes a stop button.</p> <ul style="list-style-type: none"> • Cable required* 	<ul style="list-style-type: none"> • Series 160 • ez-Box

BI - DIRECTIONAL HAND CONTROLS ▲▼



DESIGNATION	CHARACTERISTICS	WIRED TO
 <p>Mini joystick ▲▼ ezAARmini</p>	<p>This finger operated mini joystick can control the speed in both directions (forward and backward) with progressiveness. It can be mounted at the end of a tube, or on a panel.</p> <ul style="list-style-type: none"> • Cable required* 	<ul style="list-style-type: none"> • Series 160 • ez-Box
 <p>Joystick ▲▼ ezAAR</p>	<p>The joystick can control the speed in both directions (forward and backward) with progressiveness. It can be mounted on a panel and is suitable for tough environments.</p> <ul style="list-style-type: none"> • Cable required* 	<ul style="list-style-type: none"> • Series 160 • ez-Box
 <p>Forward & Backward control ▲▼ ezAFB</p>	<p>This simple button control is suitable for a basic forward and backward operation without progressiveness.</p> <ul style="list-style-type: none"> • Cable required* 	<ul style="list-style-type: none"> • Series 160 • ez-Box
 <p>Rotating Handle ▲▼ ezARH</p>	<p>The ezARH controls the speed in both directions (forward and backward) with a progressiveness following the hand control position.</p> <ul style="list-style-type: none"> • Cable required* 	<ul style="list-style-type: none"> • Series 160 • ez-Box
 <p>Mini Tiller Head ▲▼ ezATHmini</p>	<p>This compact tiller head perfectly fits small size trolleys with minimal adaptation. Equipped with a stop belly button, it is suitable for safe operations.</p> <ul style="list-style-type: none"> • Cable required* 	<ul style="list-style-type: none"> • Series 160 • ez-Box

UNI - DIRECTIONAL CONTROLS ▲




	DESIGNATION	CHARACTERISTICS	WIRED TO
	Throttle ▲ ezAV	The ezAV control is a throttle control, as commonly found on electric bikes or scooter. It can control the speed in a single direction. • Cable included	• ez-Box
	Foot Pedal ▲ ezAFP	The foot Pedal can control the speed in a single direction. • Cable included	• ez-Box

Switches

STANDARD SWITCHES**

	DESIGNATION
	Switch On/Off Button ezSONF-B • Cable required*
	Switch Key Button ezSKEY-B • Cable required*

SWITCHES FOR SERIES 160

	DESIGNATION
	Switch On/Off Button + LED ezSONF-BD • Cable required*
	Switch Push Button Color ezSPBC-BD • Cable required*
	switch Emergency ezSEMRxM/160 • Cable included

* (Cable required) - Please refer to page 26 - 27 on this catalogue to select the appropriate cable.

** (Standard switches) - Products suitable for the complete range: Series 300 - Series 10" - Series 160

Cables

CABLES FOR WIRELESS ez-Box



CABLE x METERS FOR WIRED
CONTROL
Ref. ezACxM/Box

Suitable for:

- ez-Box ezR44IN/W



CABLE x METERS FOR WIRED
CONTROL AND BUTTON
Ref. ezACxM-B/Box

Suitable for:

- ez-Box ezR44IN/W



CABLE x METERS FOR WIRED
CONTROL, WITH CHARGE PLUG FOR
ez-Box
Ref. ezACxM-UC/Box

Suitable for:

- ez-Box ezR44IN/W



CABLE x METERS FOR WIRED
CONTROL AND BUTTON & DISPLAY,
WITH CHARGE PLUG FOR ez-Box
Ref. ezACxM-UCB/Box

Suitable for:

- ez-Box ezR44IN/W

CABLES FOR SERIES 160



CABLE x METERS FOR WIRED
CONTROL AND BUTTON & DISPLAY
Ref. ezACxM-BD/160

Suitable for:

- Series 160

CABLES FOR SERIAL LINK ez-Box



CABLE x METERS FOR WIRED
CONTROL, WITH CHARGE PLUG FOR
ez-Box

Ref. ezACxM-UC/Box

Suitable for:

- ez-Box ezR44IN/U



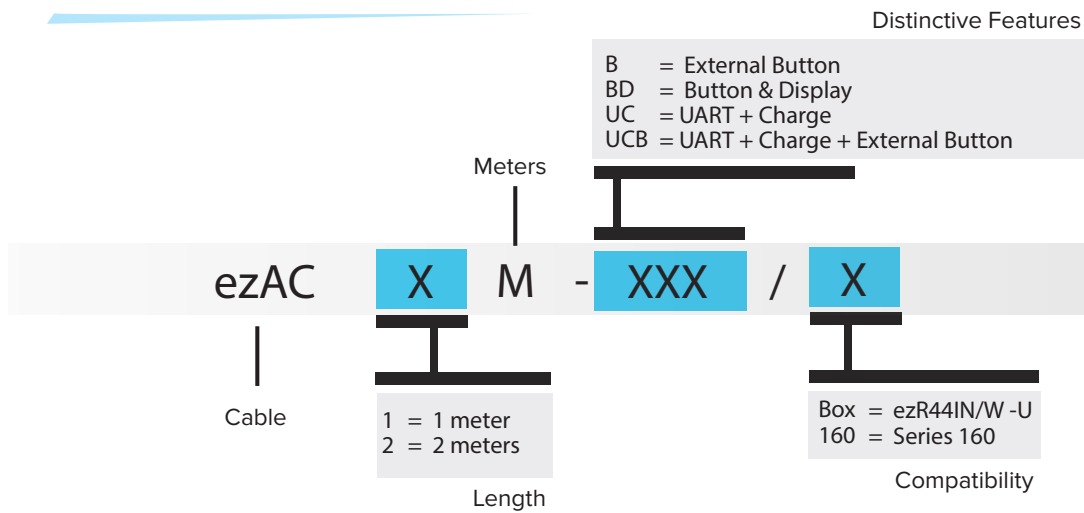
CABLE x METERS FOR WIRED
CONTROL AND BUTTON & DISPLAY,
WITH CHARGE PLUG FOR ez-Box

Ref. ezACxM-UCB/Box

Suitable for:

- ez-Box ezR44IN/U

REFERENCE'S BUILDING





CHARGER 1.8 Amp XLR charge
Plug + EU power cord (type C)
Ref. Mascot1A8

- Suitable for:
- Series 300
 - Series 10"
 - Series 160 with charge cable



CHARGER 4 Amp XLR charge
Plug + EU power cord (type E-F)
Ref. Mascot4A

- Suitable for:
- Series 300
 - Series 10"
 - Series 160 with charge cable



EMBEDDED CHARGER 1.8 Amp
Molex charge Plug + EU power
cord (type C)
Ref. Mascot1A8/160

- Suitable for:
- Series 160



CHARGER 1.8 Amp XLR charge
Plug + EU power cord (type C)
Ref. Mascot1A8/IP

- Suitable for:
- Series 300
 - Series 10"
 - Series 160 with charge cable

INTERNATIONAL COMPATIBILITY

REF.	DESIGNATION	COUNTRY PLUG EXTENSION
Mascot1A8AUS Mascot1A8/160AUS	CHARGER 1.8 Amp XLR charge Plug + AUS power cord	Australia (type I)
Mascot1A8UK Mascot1A8/160UK	CHARGER 1.8 Amp XLR charge Plug + UK power cord	United-Kingdom (type G)
Mascot1A8US Mascot1A8/160US	CHARGER 1.8 Amp XLR charge Plug + US power cord	United States (type A)

ez-Wheel®

Charge cables



**Y CHARGE CABLE WITH
SERIAL LINK**
Ref.ezCYC-U

Suitable for:

- All chargers



**CHARGE CABLE EXTENDER
WITH SERIAL LINK**
Ref. ezCCxM-U

Suitable for:

- All chargers



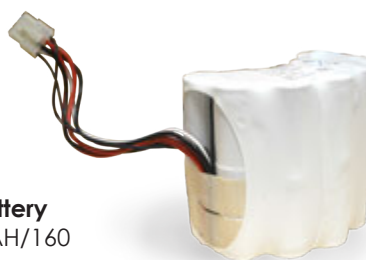
CHARGE CABLE
Ref. ezCCxM/160

Suitable for:

- Series 160

ez-Wheel®

Battery



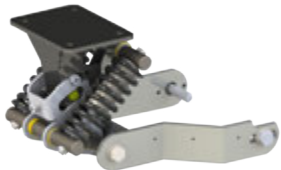
Additional battery
Ref. ezB24V3AH/160

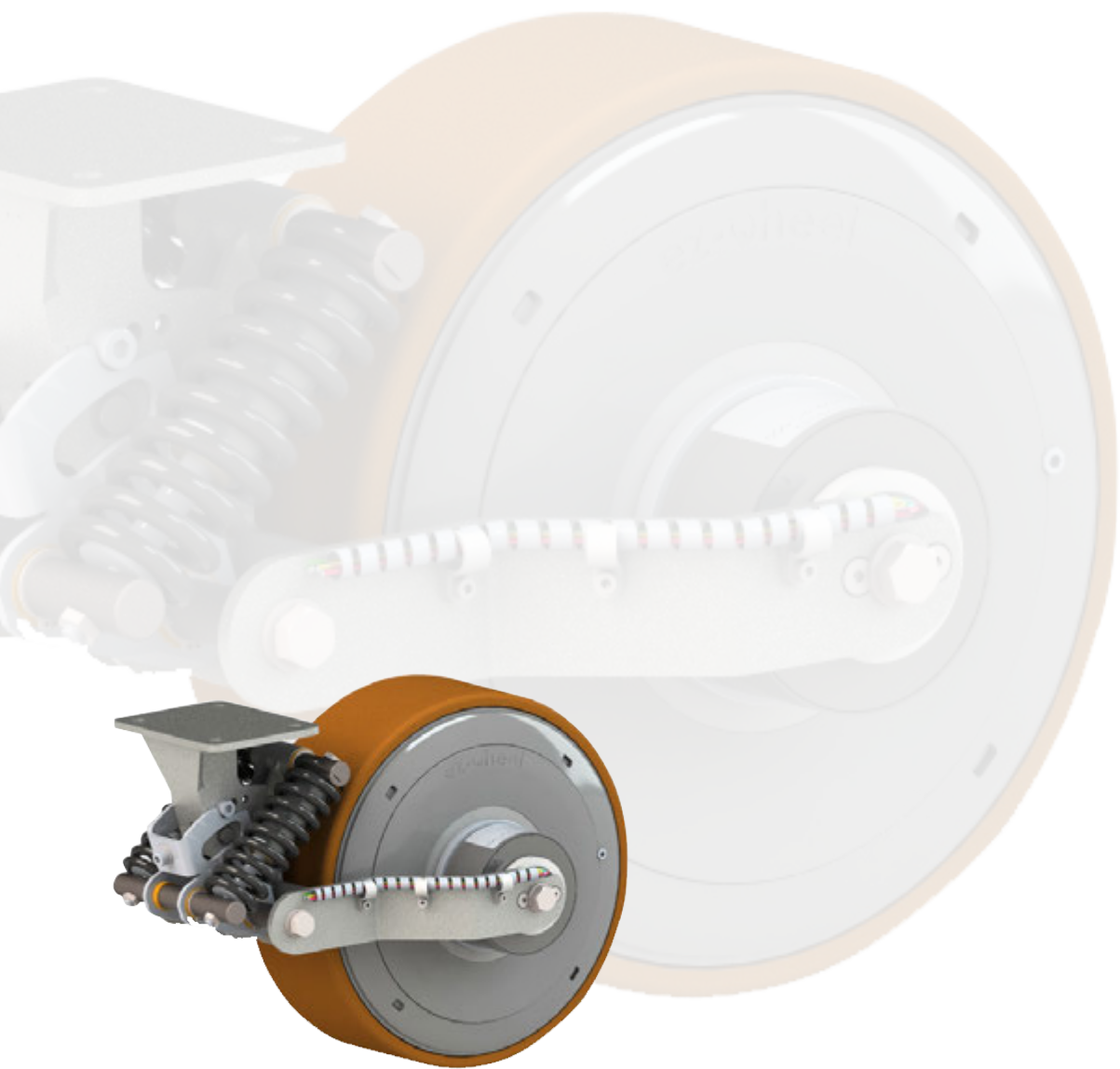
Suitable for:

- Series 160





Accessories for Integration

ACCESSORIES FOR SERIES 300/CC


DESIGNATION	CHARACTERISTICS	COMPATIBILITY
 Horizontal suspension bracket ezMCS/H/CC	The suspension bracket ezMCS/H/CC is a specific version of the ezMCS/H for the wheels Series 300/CC. It includes collars to attach the wheel's cable output.	• Series 300/CC



ACCESSORIES FOR SERIES 300 & 10"

	DESIGNATION	CHARACTERISTICS	COMPATIBILITY
	Suspension bracket ezMCS/H	The suspension bracket ezMCS/H features a suspension for height compensation. The ground contact is optimal and the charge on the wheel stays stable, ensuring a good grip for the torque transmission.	• Series 300
	Fixed bracket ezMCF/300	The ezMCF/300 fixed bracket facilitates the assembly of Series 300 wheels on rolling material (trucks, trolleys, handling tools...). The bracket is designed to immediately fit the wheel on any chassis.	• Series 300
	Fixed bracket ezMCF/10	The ezMCF/10 fixed bracket facilitates the assembly of Series 10" wheels on rolling material (trucks, trolleys, handling tools...). The bracket is designed to immediately fit the wheel on any chassis.	• Series 10"
	Anti-rotate ring ezMAR	The ezMAR is used to block the rotation of the wheel's axis, ensuring the transmission of the motor torque to the chassis.	• Series 300 • Series 10"

ACCESSORIES FOR SERIES 160

	DESIGNATION	CHARACTERISTICS	COMPATIBILITY
	Horizontal suspension bracket ezMCS/160	The suspension bracket ezMCS/160 features a suspension for height compensation. The ground contact is optimal and the charge on the wheel stays stable, ensuring a good grip for the torque transmission.	• Series 160

PUSHER PULLER

ez-Wheel®

Pusher / Puller DIN9797

ez-Wheel's pusher/puller makes any load handling easier in the food processing industry. Fully compliant to DIN9797 (food) standards, it is suitable for stainless-steel tanks, stainless-steel tubs, etc.

The ez-Wheel pusher/puller has been designed to facilitate the transport of containers and stainless-steel tanks used within the food production.

The pusher/puller is designed for an indoor use, over a wide temperature range. It offers optimal conditions of handling and stability allowing the safe transport of loads up to 400 Kgs.

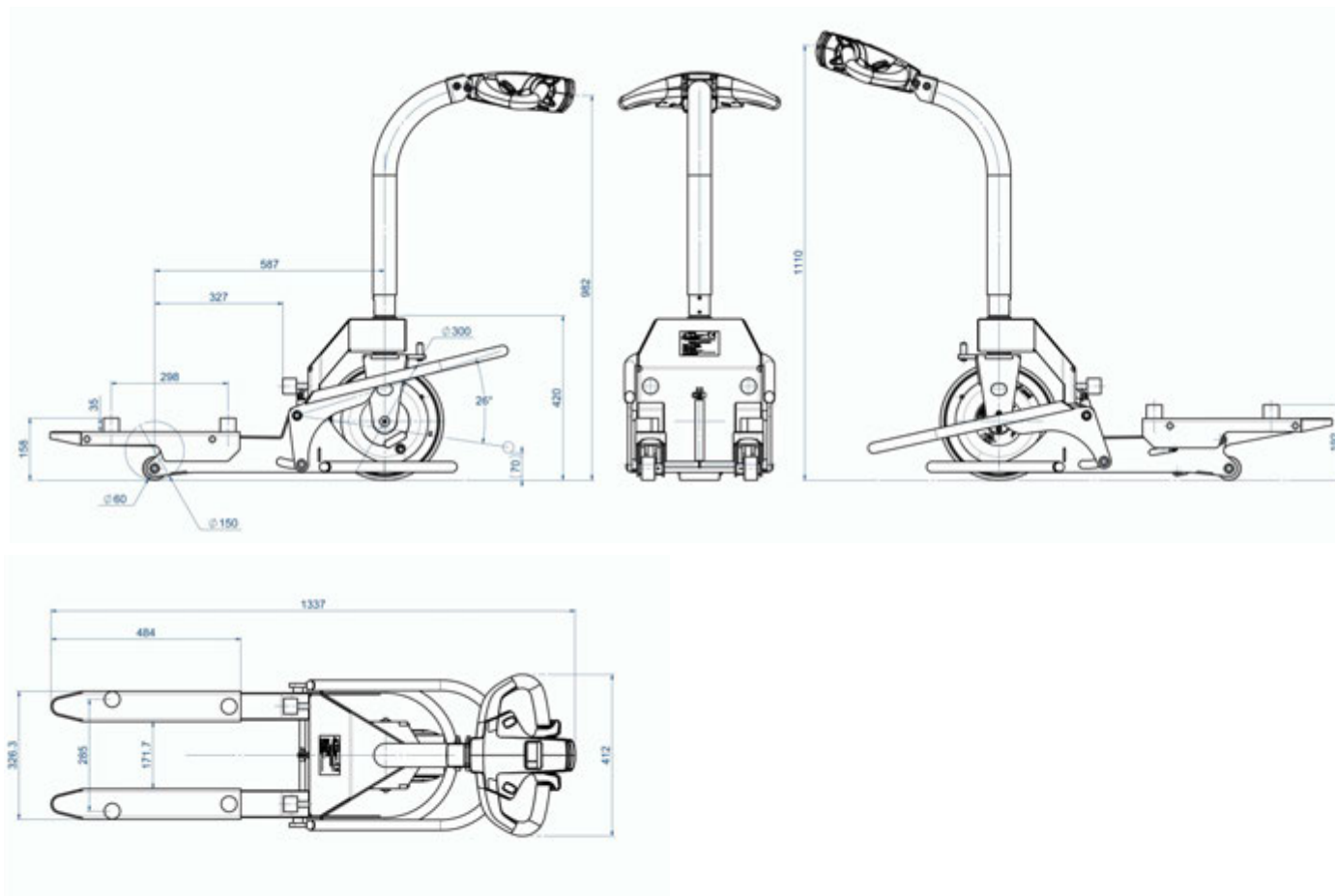
The pusher/puller is made of high quality stainless-steel (316L) and can operate in severe environments. It features a state-of-the-art drive system with wireless control between the command and the drive wheel, removing all wires and electric connections from the chassis and offering a zero-maintenance system.

Pusher/Puller Main specifications

Max. load	400 Kg
Max. speed	6 Km/h
Autonomy (number of starts)	500 - 1000
IP Index	IP65
Noise level	< 80 dB



PUSHER / PULLER BLUE PRINTS



PUSHER / PULLER POSITIONS

Low position («unlocked»):

The low position (or «unlocked» position) allows the fork insertion under the stainless steel tank.



Foot pedal lift:

A pressure on the foot pedal lifts the fork, making the loading/unloading process very simple.



High position («locked»):

The high position (or «locked» position) of the pusher/puller ensures a safe and easy transportation.





ez-Wheel SAS
P.T.E du Grand Girac
Rue Jean Doucet
16470 SAINT MICHEL - FRANCE

☎ **+33(0)5.31.61.55.80**

info@ez-wheel.com



FRANCE
2011112793

ISO 9001
v.2008



100% made
in **France**

www.ez-wheel.com